



### 產品說明:

- 使用空氣推動增壓泵產生油壓壓力輸出,當壓力到達設定值,停止作動節省氣壓能源,當油壓壓力下降,增壓泵立即補壓至設定壓力值。
- 油壓壓力依增壓泵之倍數比,由空壓壓力值調整之成正比關係。
- 依需求配置油壓閥回路數,電磁閥及壓力開關。
- 適用於長時間需求定壓之場合,節省使用電動泵之能源消耗。
- 增壓倍數有9倍至95倍可選擇。

### Application

- Convert normal air inlet pressure into high-pressure hydraulic power.
- Once pressure reaches the preset level, the drive stops immediately to conserve the pneumatic pressure and the energy. In case pressure drops, the pump will compensate pressure drops, the pump will compensate pressure automatically.
- The hydraulic output pressure depends upon the applied pump ratio, and is in direct proportion to the applied pneumatic inlet pressure.
- Can equip the choice of number of hydraulic valves, and pressure switches to meet the needs of the system and design.
- Ideal for hydraulic clamping application that needs to operating for long period of time at constant Pressure.
- Compared with normal electric pumps, this units is more energy-efficient.
- Choices of pump ration form 9 to 95.

### 型式選定:

HP63 ①      ②      P      ③      ④

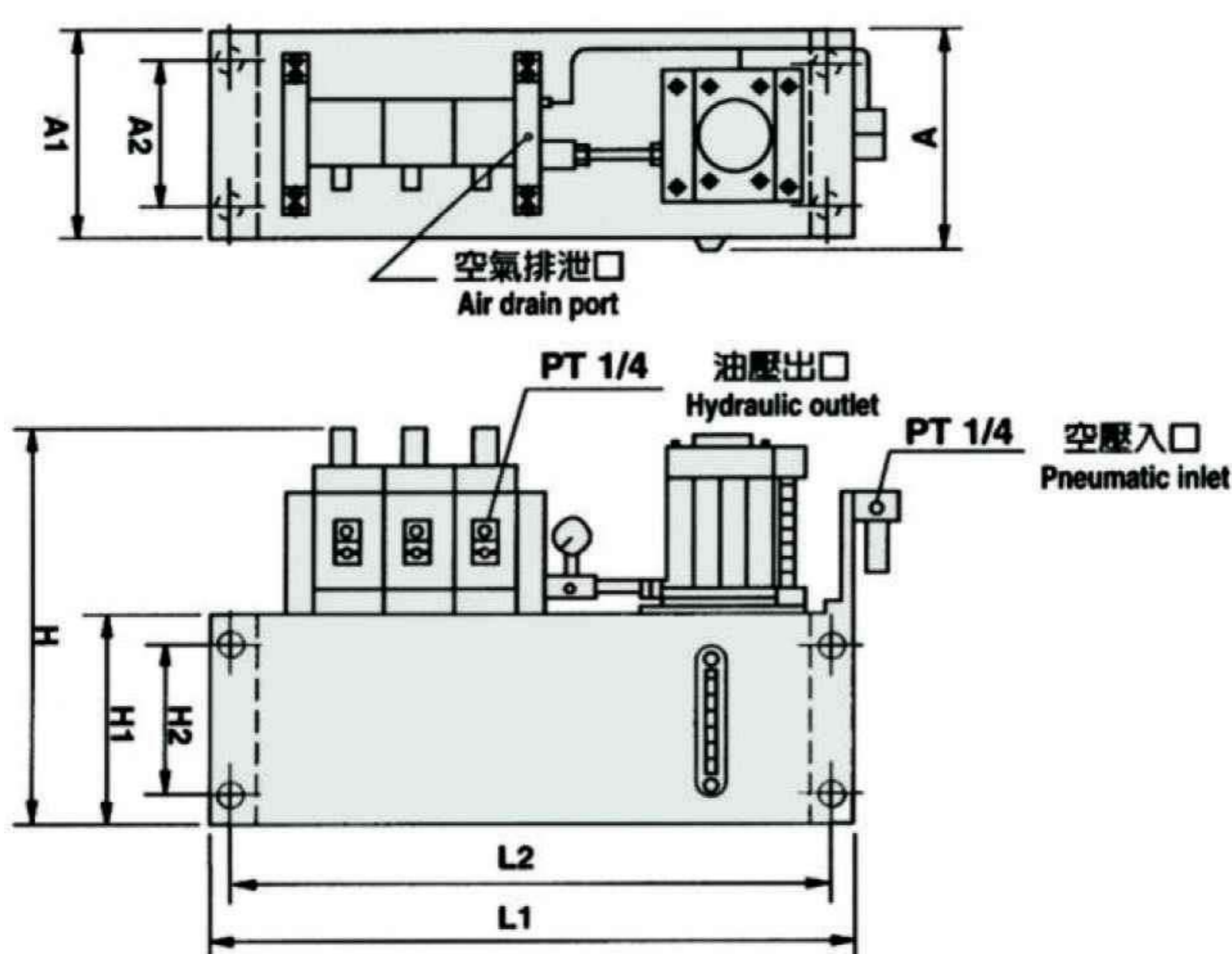
① 型式 type	增壓倍數 ratio	出油量 (L/min)	出油壓力 air@4.5kg/cm <sup>2</sup>
06	95	1.1	400(kg/cm <sup>2</sup> )
07	73	1.2	310
08	58	1.4	250
09	45	1.6	200
10	37	2.1	160
12	24	3.0	100
14	19	3.2	80
16	14	3.6	60
20	9	4.4	40

② 泵浦個數 pump number	
1	1(組)
2	2
3	3
4	4

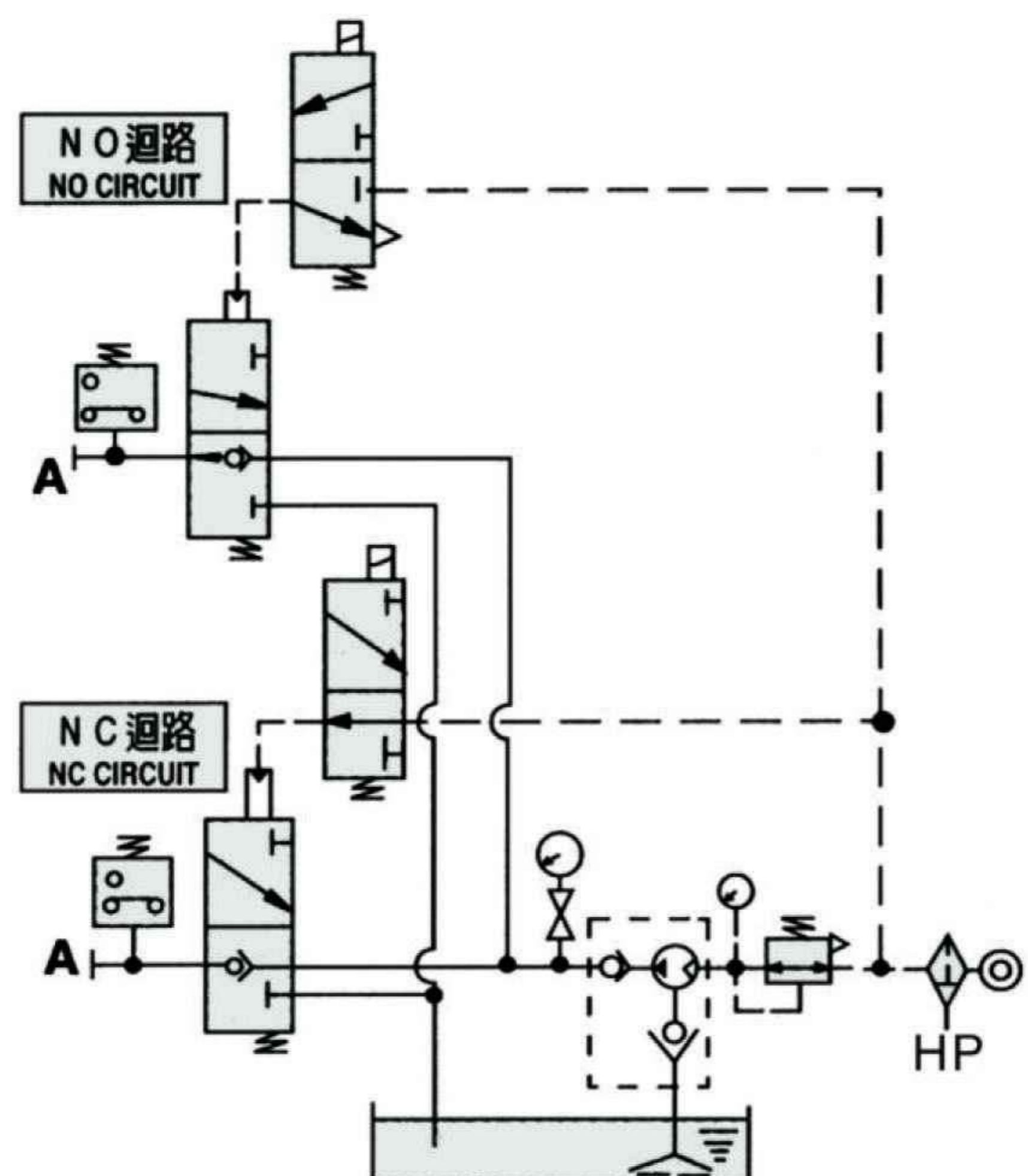
③ 控制回路 control circuit	
1	1(回路)
2	2
3	3
4	4

④ 控制系統 control method	
V	電磁閥式 solenoid valve
B	手動操作式 manual valve

### 外型尺寸 OUTLINE DIMENSIONS



### 迴路控制系統 CIRCUIT CONTROL SYSTEM



規格型號	L1	L2	H	H1	H2	A	A1	A2	重量kg
HP□-1P1□	235	210	340	150	80	175	150	80	15
HP□-1P2□	249	269	340	150	80	175	150	80	23
HP□-1P3□	353	328	340	150	80	175	150	80	25
HP□-1P4□	412	387	340	150	80	175	150	80	29

表內尺寸僅供參考,依實際出貨為準

unit 單位: mm

網址: [www.fdzc.net](http://www.fdzc.net) 联系人: 程家雄 手机: 13601809714

联系电话: 021-51872743

E-mail: [chengff@sh163.net](mailto:chengff@sh163.net)