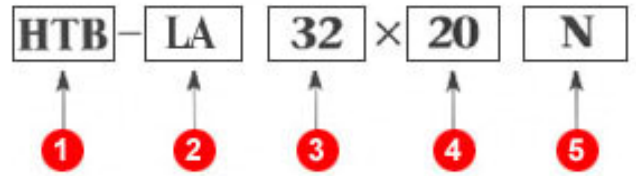


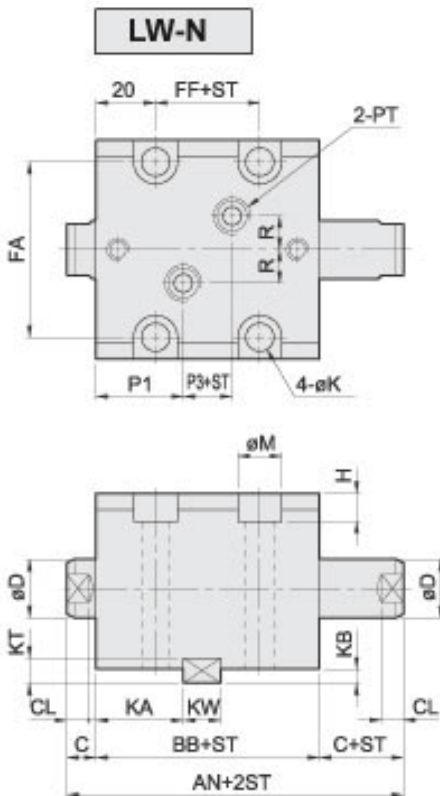
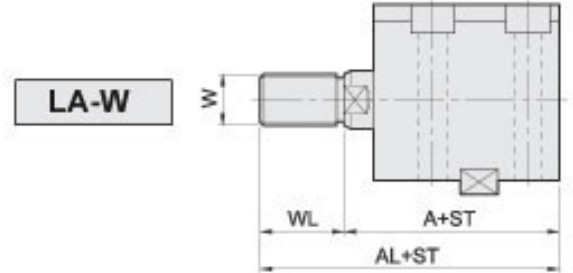
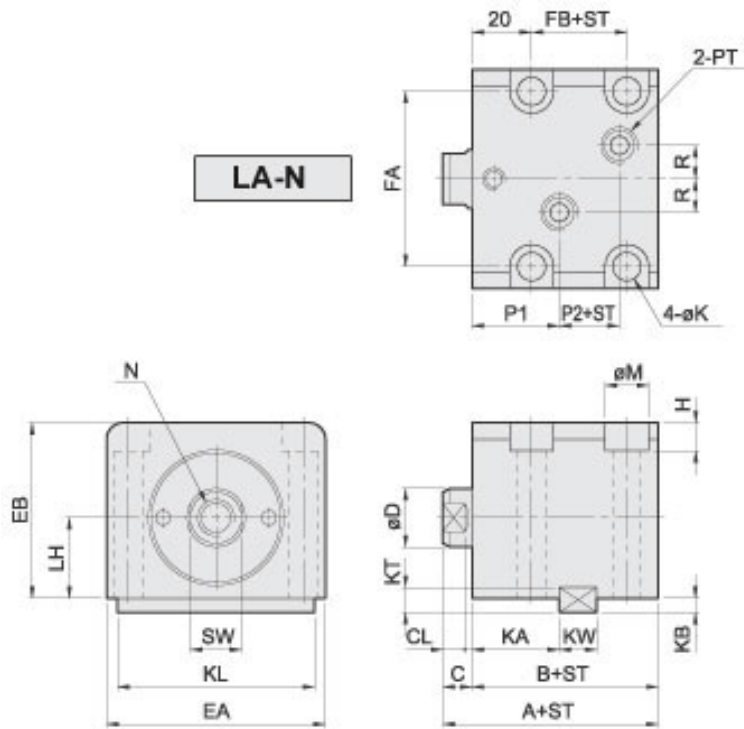
HTB 薄型油压缸 LA, LW

Bore: $\varnothing 32$ - $\varnothing 63$ mm · Pmax: 140kg/cm²

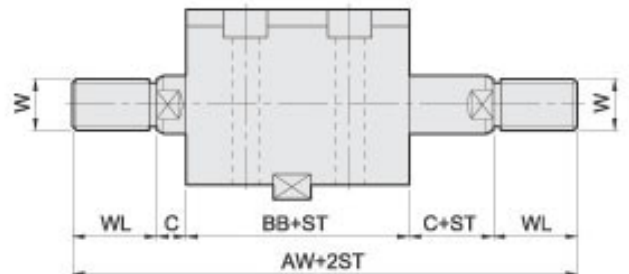
訂購標示法



1	系列別	HTB	
2	安裝型式	LA	側向單軸
		LW	側向雙軸
3	油缸內徑	$\varnothing 32, \varnothing 40, \varnothing 50, \varnothing 63$	
4	標準行程	10, 20, 30, 40, 50	
5	軸端型式	內牙:N 外牙:W	



LW-W



KEY



ST=Stroke

Key size

UNIT mm

BORE	KW	KT	KL	KA	KB
$\varnothing 32$	12	8	63	28	4.5
$\varnothing 40$	12	8	70	28	4.5
$\varnothing 50$	14	9	80	29	5
$\varnothing 63$	16	10	100	31	5.5