

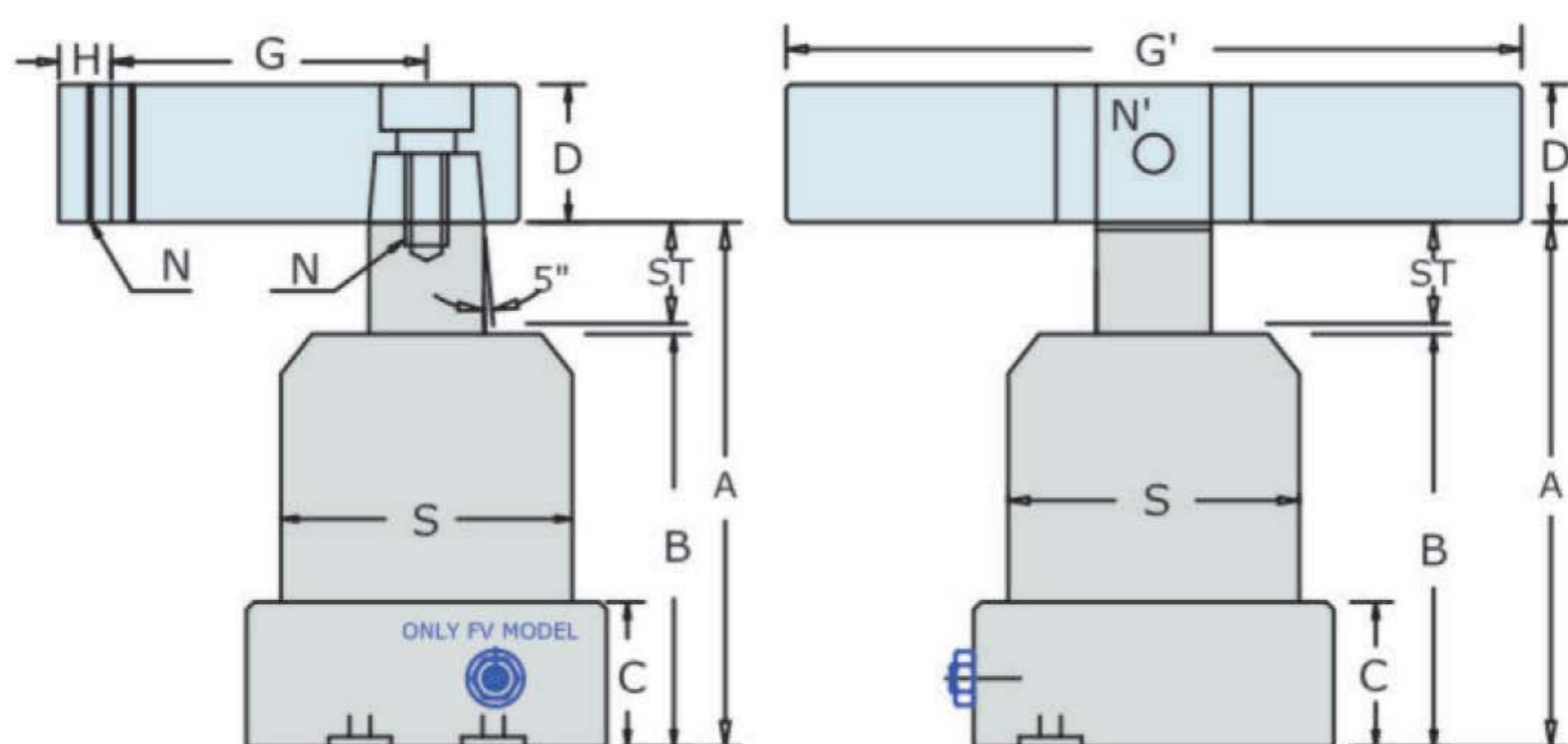
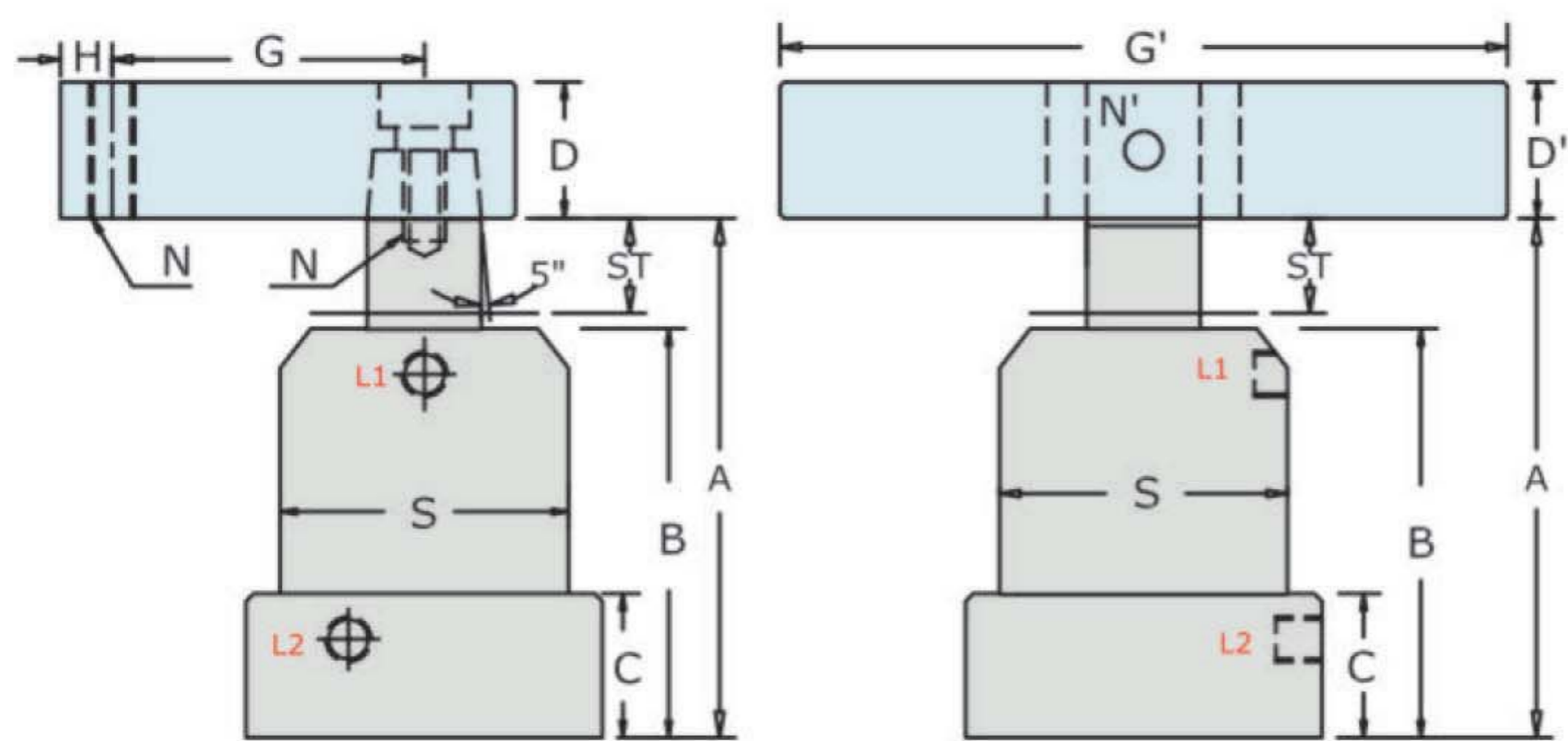
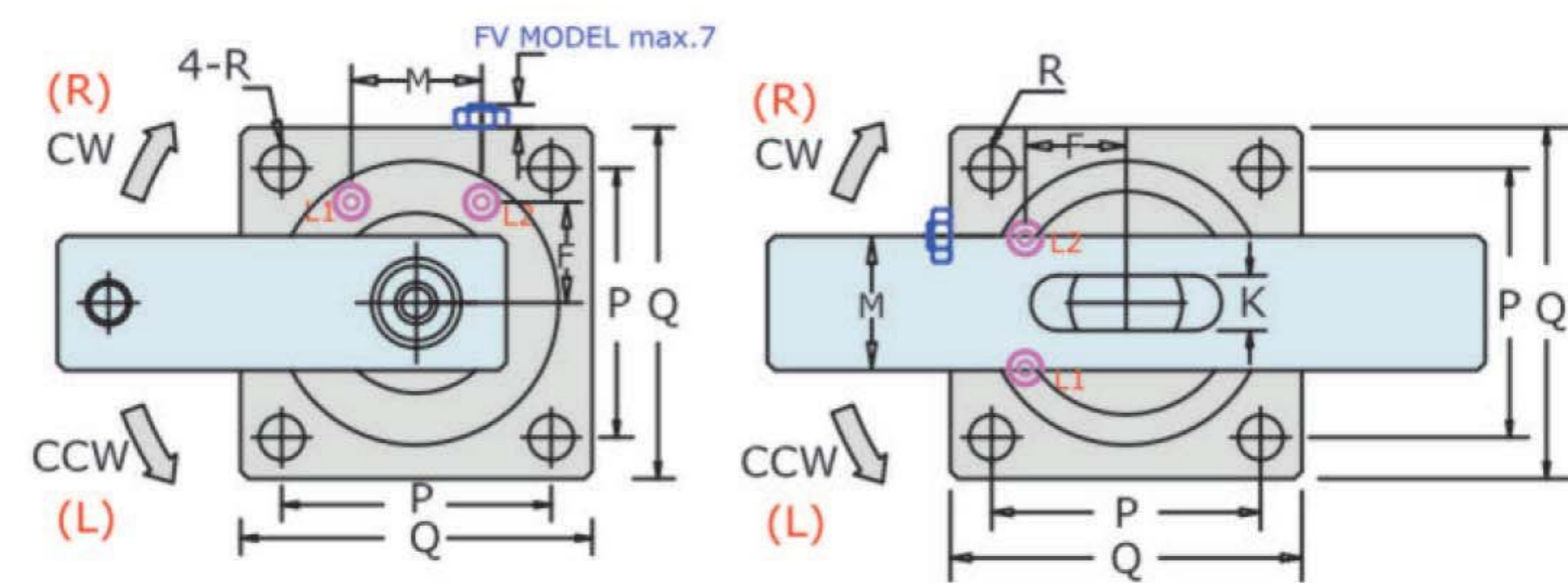
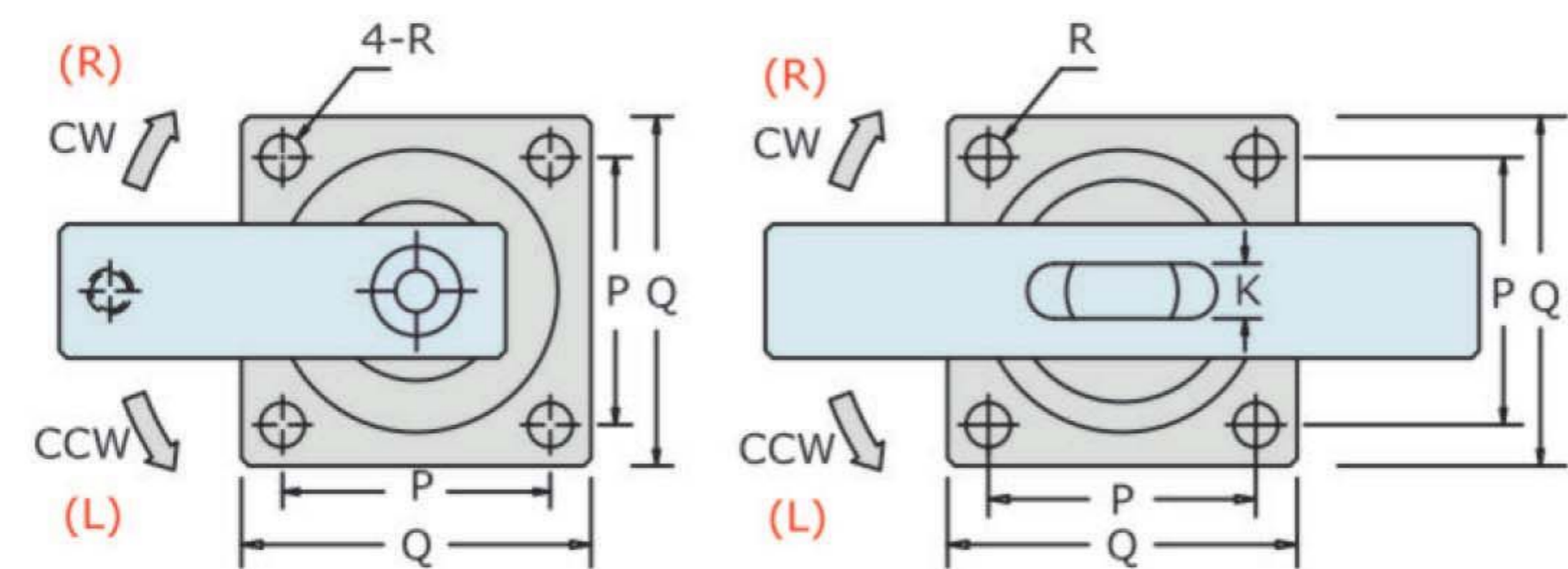
NH series

Hydraulic Swing Clamping Cylinder

管接式: Line Type

最大使用壓力 Max: 70kg/cm²

油路板式: Manifold Type



NHS

NHSD

NHS

NHSD

四方底座型 flang type	NHS-25 NHSD-25	NHS-32 NHSD-32	NHS-40 NHSD-40	NHS-50 NHSD-50	NHS-63 NHSD-63
最大使用壓力 max. pressure	70kg/cm ²				
一般使用壓力 normal pressure	20-45kg/cm ²				
缸體運行方式 acting type	複動 double acting				
轉角度數 swivel angle	90°(0°, 45°, 60°)+2°				
轉角行程 swivel stroke	12	14	14	14	14
夾緊行程 clamping stroke	14	15	15	15	15
活塞直徑 bore dia.	25	32	40	50	63
活塞杆徑 piston rod dia.	18	20	20	20	25
理論壓力(25kg/cm ²) clamping force	59kg	125kg	200kg	400kg	600kg
A放鬆狀態 unclamp	100	111	113.6	114.5	118
B	70	76	80	80	85
C	23	25	27	27	32
D	□25.4	□25.4	□25.4	□25.4	□32
D'	□19	□22	□22	□22	□25.4
G	50	55	55	55	75
G'	100	120	120	120	140
H	10	10	10	10	11
K	9	10	10	10	12
油孔L1(夾緊clamp) / L2(放鬆unclamp)	1/8PT	1/8PT	1/8PT	1/8PT	1/8PT
油路板型 O-ring Manifold	S4	S4	S4	S4	S4
N	M10x1.5	M10x1.5	M10x1.5	M10x1.5	M12x1.75
N'	∅8	∅8	∅8	∅8	∅10
P	40	44	48	57	70
Q	50	55	62	74	88
R	∅6.5	∅6.5	∅8.5	∅8.5	∅10.5
S	∅45	∅50	∅54	∅65	∅80
M	18	24	26	30	40
F	15	17	20	25	30
weight 重量 kg	0.8	1.0	1.1	1.4	2.3

網址: www.fdzc.net 联系人: 程家雄 手机: 13601809714

unit 單位: mm

联系电话: 021-51872743

E-mail: chengff@sh163.net