

PTA 動向鋼珠定位螺桿

Movable Steel Ball Positioning Screw

- 材質: 本體S45C 鋼珠SUJ2
- 硬度: 本體HRC35° 鋼珠HRC62°
- Material: Body:S45C Steel ball:SUJ2
- Hardness: Body:HRC35° Steel ball:HRC62°

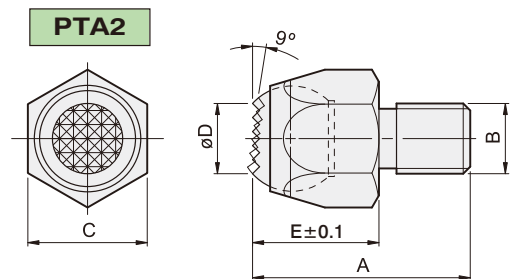
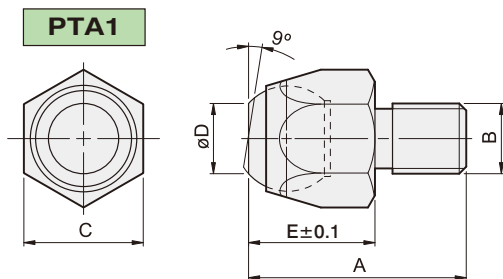


PTA1

PTA2

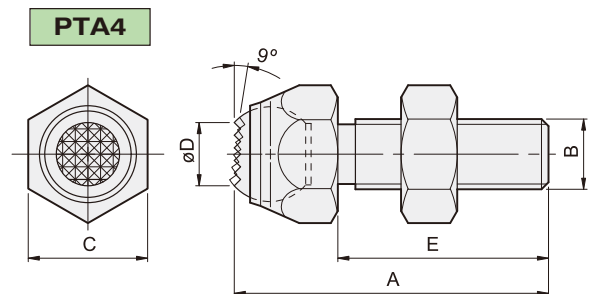
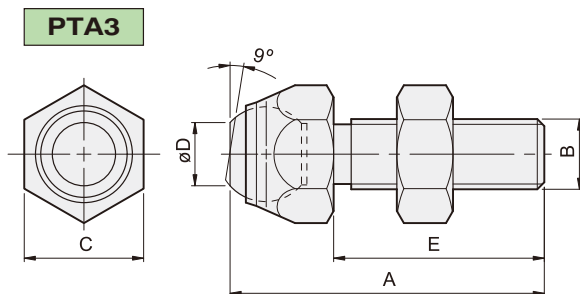
PTA3

PTA4



| MODEL | A | B | C | D | E | kg |
|-----------|----|----------|----|----|----|-------|
| PTA1-0006 | 21 | M6x1.0 | 10 | 6 | 10 | 0.012 |
| PTA1-0108 | 25 | M8x1.25 | 14 | 8 | 12 | 0.015 |
| PTA1-0210 | 30 | M10x1.5 | 17 | 10 | 16 | 0.025 |
| PTA1-0312 | 35 | M12x1.75 | 22 | 12 | 22 | 0.070 |
| PTA1-0416 | 42 | M16x2.0 | 27 | 14 | 26 | 0.140 |
| PTA1-0520 | 55 | M20x2.5 | 36 | 14 | 27 | 0.280 |
| PTA1-0624 | 65 | M24x2.0 | 36 | 18 | 32 | 0.560 |
| PTA1-0730 | 80 | M30x2.0 | 46 | 21 | 35 | 0.880 |

| MODEL | A | B | C | D | E | kg |
|-----------|----|----------|----|----|----|-------|
| PTA2-0006 | 21 | M6x1.0 | 10 | 6 | 10 | 0.012 |
| PTA2-0108 | 25 | M8x1.25 | 14 | 8 | 12 | 0.015 |
| PTA2-0210 | 30 | M10x1.5 | 17 | 10 | 16 | 0.025 |
| PTA2-0312 | 35 | M12x1.75 | 22 | 12 | 22 | 0.070 |
| PTA2-0416 | 42 | M16x2.0 | 27 | 14 | 26 | 0.140 |
| PTA2-0520 | 55 | M20x2.5 | 36 | 14 | 27 | 0.280 |
| PTA2-0624 | 65 | M24x2.0 | 36 | 18 | 32 | 0.560 |
| PTA2-0730 | 80 | M30x2.0 | 46 | 21 | 35 | 0.880 |



| MODEL | A | B | C | D | E | kg |
|-----------|-----|----------|----|----|----|-------|
| PTA3-0108 | 36 | M8x1.25 | 14 | 7 | 25 | 0.025 |
| PTA3-0210 | 45 | M10x1.5 | 17 | 8 | 30 | 0.055 |
| PTA3-0312 | 50 | M12x1.75 | 17 | 10 | 35 | 0.055 |
| PTA3-0416 | 60 | M16x2.0 | 24 | 12 | 40 | 0.140 |
| PTA3-0520 | 87 | M20x2.5 | 36 | 14 | 60 | 0.330 |
| PTA3-0624 | 98 | M24x2.0 | 36 | 18 | 66 | 0.595 |
| PTA3-0730 | 110 | M30x2.0 | 46 | 21 | 75 | 1.030 |

| MODEL | A | B | C | D | E | kg |
|-----------|-----|----------|----|----|----|-------|
| PTA4-0108 | 36 | M8x1.25 | 14 | 7 | 25 | 0.025 |
| PTA4-0210 | 45 | M10x1.5 | 17 | 8 | 30 | 0.055 |
| PTA4-0312 | 50 | M12x1.75 | 17 | 10 | 35 | 0.055 |
| PTA4-0416 | 60 | M16x2.0 | 24 | 12 | 40 | 0.140 |
| PTA4-0520 | 87 | M20x2.5 | 36 | 14 | 60 | 0.330 |
| PTA4-0624 | 98 | M24x2.0 | 36 | 18 | 66 | 0.595 |
| PTA4-0730 | 110 | M30x2.0 | 46 | 21 | 75 | 1.030 |

网址: www.fdzc.net 联系人: 程家雄 手机: 13601809714

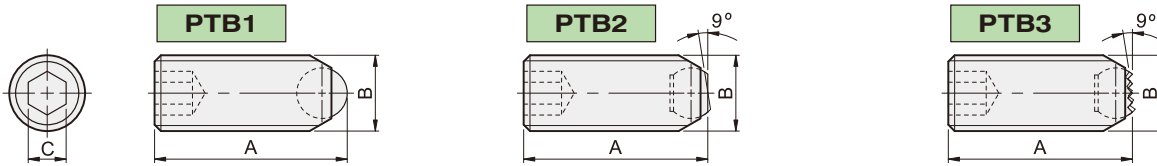
联系电话: 021-51872743

E-mail: chengff@sh163.net

PTB 動向鋼珠螺桿

Movable Steel Ball Screw

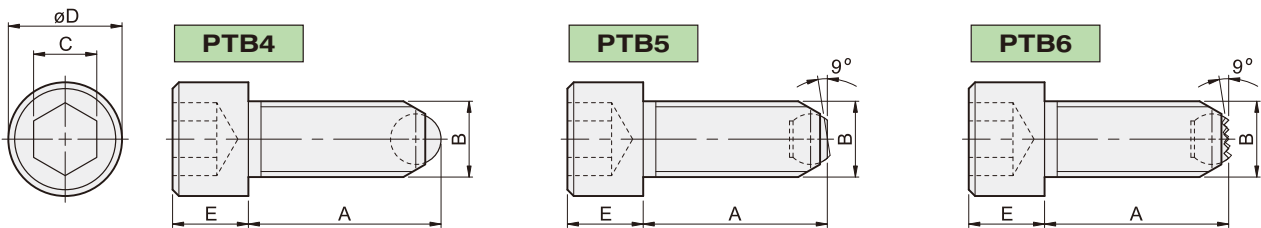
- 材質:本體SCM21 鋼珠SUJ2
- 硬度:本體HRC32°~38° 鋼珠HRC62°
- Material: Body:SCM21 Steel ball:SUJ2
- Hardness: Body:HRC32~38° Steel ball:HRC62°



| MODEL | A | B | C | kg |
|-----------|------|----------|---|--------|
| PTB1-0206 | 13.5 | M6x1.0 | 3 | 0.0024 |
| PTB1-0306 | 23.5 | M6x1.0 | 3 | 0.0038 |
| PTB1-0408 | 12 | M8x1.25 | 4 | 0.0032 |
| PTB1-0508 | 20 | M8x1.25 | 4 | 0.0058 |
| PTB1-0608 | 30 | M8x1.25 | 4 | 0.0090 |
| PTB1-0710 | 17 | M10x1.5 | 5 | 0.0067 |
| PTB1-0810 | 27 | M10x1.5 | 5 | 0.0112 |
| PTB1-0910 | 37 | M10x1.5 | 5 | 0.0162 |
| PTB1-1012 | 23.2 | M12x1.75 | 6 | 0.0125 |
| PTB1-1112 | 31.2 | M12x1.75 | 6 | 0.0200 |
| PTB1-1212 | 41.2 | M12x1.75 | 6 | 0.0300 |
| PTB1-1312 | 51.2 | M12x1.75 | 6 | 0.0400 |
| PTB1-1416 | 25.6 | M16x2.0 | 8 | 0.0280 |
| PTB1-1516 | 35.6 | M16x2.0 | 8 | 0.0400 |
| PTB1-1616 | 45.6 | M16x2.0 | 8 | 0.0450 |
| PTB1-1716 | 55.6 | M16x2.0 | 8 | 0.0550 |
| PTB1-1816 | 65.6 | M16x2.0 | 8 | 0.0650 |

| MODEL | A | B | C | kg |
|-----------|------|----------|---|--------|
| PTB2-2006 | 13 | M6x1.0 | 3 | 0.0024 |
| PTB2-2106 | 23 | M6x1.0 | 3 | 0.0038 |
| PTB2-2208 | 11.2 | M8x1.25 | 4 | 0.0032 |
| PTB2-2308 | 19.2 | M8x1.25 | 4 | 0.0058 |
| PTB2-2408 | 29.2 | M8x1.25 | 4 | 0.0090 |
| PTB2-2510 | 15 | M10x1.5 | 5 | 0.0067 |
| PTB2-2610 | 25 | M10x1.5 | 5 | 0.0112 |
| PTB2-2710 | 35 | M10x1.5 | 5 | 0.0162 |
| PTB2-2812 | 22 | M12x1.75 | 6 | 0.0125 |
| PTB2-2912 | 30 | M12x1.75 | 6 | 0.0200 |
| PTB2-3012 | 40 | M12x1.75 | 6 | 0.0300 |
| PTB2-3112 | 50 | M12x1.75 | 6 | 0.0400 |
| PTB2-3216 | 24 | M16x2.0 | 8 | 0.0280 |
| PTB2-3316 | 34 | M16x2.0 | 8 | 0.0400 |
| PTB2-3416 | 44 | M16x2.0 | 8 | 0.0450 |
| PTB2-3516 | 54 | M16x2.0 | 8 | 0.0550 |
| PTB2-3616 | 64 | M16x2.0 | 8 | 0.0650 |

| MODEL | A | B | C | kg |
|-----------|------|----------|---|--------|
| PTB3-3806 | 13 | M6x1.0 | 3 | 0.0024 |
| PTB3-3906 | 23 | M6x1.0 | 3 | 0.0038 |
| PTB3-4008 | 11.2 | M8x1.25 | 4 | 0.0032 |
| PTB3-4108 | 19.2 | M8x1.25 | 4 | 0.0058 |
| PTB3-4208 | 29.2 | M8x1.25 | 4 | 0.0090 |
| PTB3-4310 | 15 | M10x1.5 | 5 | 0.0067 |
| PTB3-4410 | 25 | M10x1.5 | 5 | 0.0112 |
| PTB3-4510 | 35 | M10x1.5 | 5 | 0.0162 |
| PTB3-4612 | 22 | M12x1.75 | 6 | 0.0125 |
| PTB3-4712 | 30 | M12x1.75 | 6 | 0.0200 |
| PTB3-4812 | 40 | M12x1.75 | 6 | 0.0300 |
| PTB3-4912 | 50 | M12x1.75 | 6 | 0.0400 |
| PTB3-5016 | 24 | M16x2.0 | 8 | 0.0280 |
| PTB3-5116 | 34 | M16x2.0 | 8 | 0.0400 |
| PTB3-5216 | 44 | M16x2.0 | 8 | 0.0450 |
| PTB3-5316 | 54 | M16x2.0 | 8 | 0.0550 |
| PTB3-5416 | 64 | M16x2.0 | 8 | 0.0650 |



| MODEL | A | B | C | D | E | kg |
|-----------|------|-----|----|----|----|--------|
| PTB4-0106 | 14.5 | M6 | 5 | 10 | 6 | 0.0053 |
| PTB4-0206 | 23.5 | M6 | 5 | 10 | 6 | 0.0074 |
| PTB4-0306 | 33.5 | M6 | 5 | 10 | 6 | 0.0095 |
| PTB4-0408 | 18.7 | M8 | 6 | 13 | 8 | 0.0135 |
| PTB4-0508 | 28.7 | M8 | 6 | 13 | 8 | 0.0200 |
| PTB4-0608 | 38.7 | M8 | 6 | 13 | 8 | 0.0240 |
| PTB4-0710 | 25 | M10 | 8 | 16 | 10 | 0.0260 |
| PTB4-0810 | 40 | M10 | 8 | 16 | 10 | 0.0340 |
| PTB4-0910 | 60 | M10 | 8 | 16 | 10 | 0.0460 |
| PTB4-1012 | 31.2 | M12 | 10 | 18 | 12 | 0.0400 |
| PTB4-1112 | 46.2 | M12 | 10 | 18 | 12 | 0.0500 |
| PTB4-1212 | 66.2 | M12 | 10 | 18 | 12 | 0.0700 |
| PTB4-1312 | 81.2 | M12 | 10 | 18 | 12 | 0.0830 |
| PTB4-1416 | 40.6 | M16 | 14 | 24 | 16 | 0.0900 |
| PTB4-1516 | 50.6 | M16 | 14 | 24 | 16 | 0.1100 |
| PTB4-1616 | 65.6 | M16 | 14 | 24 | 16 | 0.1300 |
| PTB4-1716 | 90.6 | M16 | 14 | 24 | 16 | 0.1700 |

| MODEL | A | B | C | D | E | kg |
|-----------|----|-----|----|----|----|--------|
| PTB5-1806 | 14 | M6 | 5 | 10 | 6 | 0.0053 |
| PTB5-1906 | 23 | M6 | 5 | 10 | 6 | 0.0074 |
| PTB5-2006 | 33 | M6 | 5 | 10 | 6 | 0.0095 |
| PTB5-2108 | 18 | M8 | 6 | 13 | 8 | 0.0135 |
| PTB5-2208 | 28 | M8 | 6 | 13 | 8 | 0.0200 |
| PTB5-2308 | 38 | M8 | 6 | 13 | 8 | 0.0240 |
| PTB5-2410 | 24 | M10 | 8 | 16 | 10 | 0.0260 |
| PTB5-2510 | 39 | M10 | 8 | 16 | 10 | 0.0340 |
| PTB5-2610 | 59 | M10 | 8 | 16 | 10 | 0.0460 |
| PTB5-2712 | 30 | M12 | 10 | 18 | 12 | 0.0400 |
| PTB5-2812 | 45 | M12 | 10 | 18 | 12 | 0.0500 |
| PTB5-2912 | 65 | M12 | 10 | 18 | 12 | 0.0700 |
| PTB5-3012 | 80 | M12 | 10 | 18 | 12 | 0.0830 |
| PTB5-3116 | 39 | M16 | 14 | 24 | 16 | 0.0900 |
| PTB5-3216 | 49 | M16 | 14 | 24 | 16 | 0.1100 |
| PTB5-3316 | 64 | M16 | 14 | 24 | 16 | 0.1300 |
| PTB5-3416 | 89 | M16 | 14 | 24 | 16 | 0.1700 |

| MODEL | A | B | C | D | E | kg |
|-----------|----|-----|----|----|----|--------|
| PTB6-3506 | 14 | M6 | 5 | 10 | 6 | 0.0053 |
| PTB6-3606 | 23 | M6 | 5 | 10 | 6 | 0.0074 |
| PTB6-3706 | 33 | M6 | 5 | 10 | 6 | 0.0095 |
| PTB6-3808 | 18 | M8 | 6 | 13 | 8 | 0.0135 |
| PTB6-3908 | 28 | M8 | 6 | 13 | 8 | 0.0200 |
| PTB6-4008 | 38 | M8 | 6 | 13 | 8 | 0.0240 |
| PTB6-4110 | 24 | M10 | 8 | 16 | 10 | 0.0260 |
| PTB6-4210 | 39 | M10 | 8 | 16 | 10 | 0.0340 |
| PTB6-4310 | 59 | M10 | 8 | 16 | 10 | 0.0460 |
| PTB6-4412 | 30 | M12 | 10 | 18 | 12 | 0.0400 |
| PTB6-4512 | 45 | M12 | 10 | 18 | 12 | 0.0500 |
| PTB6-4612 | 65 | M12 | 10 | 18 | 12 | 0.0700 |
| PTB6-4712 | 80 | M12 | 10 | 18 | 12 | 0.0830 |
| PTB6-4816 | 39 | M16 | 14 | 24 | 16 | 0.0900 |
| PTB6-4916 | 49 | M16 | 14 | 24 | 16 | 0.1100 |
| PTB6-5016 | 64 | M16 | 14 | 24 | 16 | 0.1300 |
| PTB6-5116 | 89 | M16 | 14 | 24 | 16 | 0.1700 |

註: M6x1.0 M8x1.25 M10x1.5 M12x1.75 M16x2.0

網址: www.fdzc.net 联系人: 程家雄 手机: 13601809714

联系电话: 021-51872743

E-mail: chengff@sh163.net

PTC 齒型螺桿

Tooth type Screw

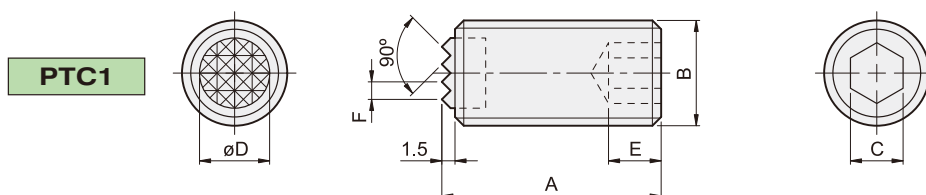
- 材質:本體S45C 齒形SKH9
- 硬度:本體HRC35° 齒形HRC60°
- Material: Body:S45C Teeth:SKH9
- Hardness: Body:HRC35° Teeth:HRC60°



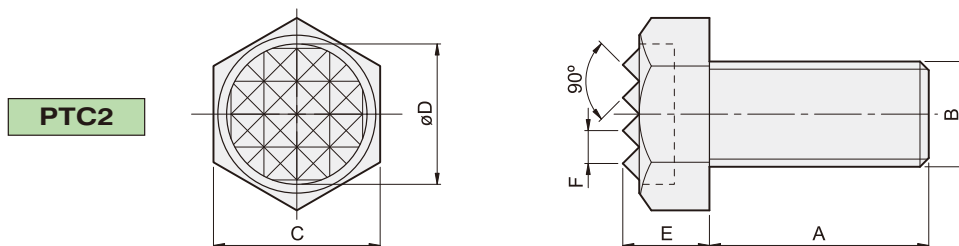
PTC1



PTC2



| MODEL | A | B | C | D | E | F | kg |
|-----------|----|----------|----|------|---|-----|-------|
| PTC1-0110 | 25 | M10x1.5 | 5 | 6.5 | 4 | 2.3 | 0.015 |
| PTC1-0210 | 50 | M10x1.5 | 5 | 6.5 | 5 | 2.3 | 0.030 |
| PTC1-0312 | 25 | M12x1.75 | 6 | 8 | 5 | 2.3 | 0.022 |
| PTC1-0412 | 50 | M12x1.75 | 6 | 8 | 5 | 2.3 | 0.045 |
| PTC1-0516 | 25 | M16x2.0 | 8 | 11.5 | 6 | 3 | 0.038 |
| PTC1-0616 | 50 | M16x2.0 | 8 | 11.5 | 6 | 3 | 0.078 |
| PTC1-0720 | 25 | M20x2.5 | 10 | 13 | 8 | 3 | 0.058 |
| PTC1-0820 | 50 | M20x2.5 | 10 | 13 | 8 | 3 | 0.120 |



| MODEL | A | B | C | D | E | F | kg |
|-----------|----|----------|----|------|------|-----|-------|
| PTC2-0106 | 25 | M6x1.0 | 10 | 7.9 | 6 | 2.3 | 0.008 |
| PTC2-0208 | 25 | M8x1.25 | 13 | 9.5 | 7.3 | 3 | 0.015 |
| PTC2-0310 | 25 | M10x1.5 | 17 | 12.7 | 8.4 | 3 | 0.030 |
| PTC2-0410 | 40 | M10x1.5 | 17 | 12.7 | 8.4 | 3 | 0.035 |
| PTC2-0512 | 25 | M12x1.75 | 19 | 15.9 | 9.5 | 3 | 0.035 |
| PTC2-0612 | 40 | M12x1.75 | 19 | 15.9 | 9.5 | 3 | 0.050 |
| PTC2-0716 | 35 | M16x2.0 | 24 | 19.1 | 12 | 3 | 0.085 |
| PTC2-0816 | 50 | M16x2.0 | 24 | 19.1 | 12 | 3 | 0.100 |
| PTC2-0920 | 40 | M20x2.5 | 30 | 25.4 | 14.5 | 3 | 0.160 |
| PTC2-1020 | 60 | M20x2.5 | 30 | 25.4 | 14.5 | 3 | 0.205 |

网址: www.fdzc.net 联系人: 程家雄 手机: 13601809714

联系电话: 021-51872743

E-mail: chengff@sh163.net

PTD 支持件

Supporting Parts

- PTD1 PTD2 PTD3 • 材質:SKH9 硬度:HRC60°
- PTD4 PTD5 • 材質:本體SCM440 硬度:HRC60°
- PTD1 PTD2 PTD3 • Material: SKH9 Hardness: HRC60°
- PTD4 PTD5 • Material: Body:SCM440 Hardness: HRC60°



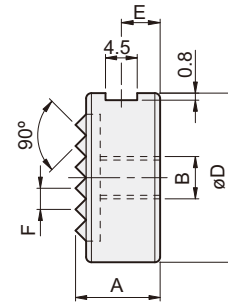
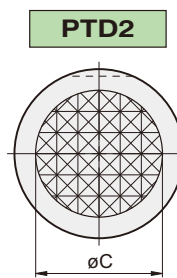
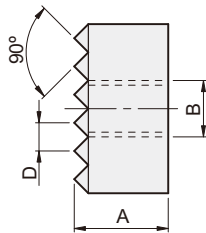
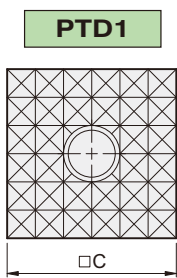
PTD1

PTD2

PTD3

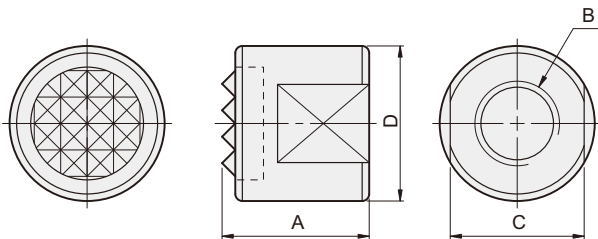
PTD4

PTD5



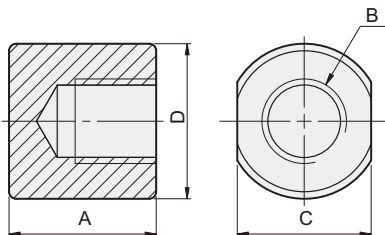
| MODEL | A | B | C | D | kg |
|-----------|----|--------|----|-----|-------|
| PTD1-0110 | 10 | M5x0.8 | 10 | 2.3 | 0.008 |
| PTD1-0212 | 10 | M6x1.0 | 12 | 3 | 0.010 |
| PTD1-0320 | 10 | M6x1.0 | 20 | 3 | 0.030 |
| PTD1-0425 | 10 | M6x1.0 | 25 | 3 | 0.043 |

| MODEL | A | B | C | D | E | F | kg |
|-----------|----|--------|------|----|-----|-----|-------|
| PTD2-0110 | 10 | M5x0.8 | 8.1 | 10 | 3.4 | 2.3 | 0.005 |
| PTD2-0212 | 12 | M6x1.0 | 9.6 | 12 | 4 | 3 | 0.008 |
| PTD2-0316 | 12 | M6x1.0 | 13 | 16 | 4 | 3 | 0.016 |
| PTD2-0420 | 12 | M6x1.0 | 16.3 | 20 | 4 | 3 | 0.025 |
| PTD2-0525 | 12 | M6x1.0 | 19.5 | 25 | 4 | 3 | 0.040 |



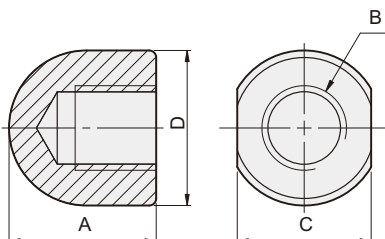
PTD3

| MODEL | A | B | C | D | kg |
|-----------|----|----------|----|----|-------|
| PTD3-0112 | 20 | M12x1.75 | 19 | 22 | 0.043 |
| PTD3-0216 | 25 | M16x2.0 | 24 | 28 | 0.080 |



PTD4

| MODEL | A | B | C | D | kg |
|-----------|----|----------|----|----|-------|
| PTD4-0112 | 20 | M12x1.75 | 19 | 22 | 0.043 |
| PTD4-0216 | 25 | M16x2.0 | 24 | 28 | 0.076 |



PTD5

| MODEL | A | B | C | D | kg |
|-----------|----|----------|----|----|-------|
| PTD5-0112 | 20 | M12x1.75 | 19 | 22 | 0.042 |
| PTD5-0216 | 25 | M16x2.0 | 24 | 28 | 0.063 |

网址: www.fdzc.net 联系人: 程家雄 手机: 13601809714

联系电话: 021-51872743

E-mail: chengff@sh163.net