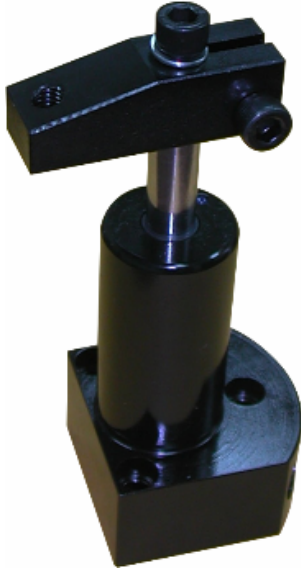


030 系列

转角油缸-下法兰式

安装形式：管式与板式一体



Application

- n It is not necessary to manufacture hole for installing, you just need to use bolt to fix the clamp on fixture platen. It is helpful for you to clamp thicker workpiece because the main structure of cylinder body is on the fixture platen.
- n Installing is very simple, you just need 3-4 pcs of bolts to fix your clamp cylinder, and the mounting type has piping mounting and manifold mounting. It has single acting and double acting type.

Feature

Double acting

Oil circuits control clamping and unclamping, you can control the clamp and unclamp by changing the direction of direction valve.

Single acting

The design for oil circuit is simpler, it is not necessary to design for unclamp, it can return back to original position by spring, the system design is simple because of few accessories.

Note

- n It can return back to position under free load.
- n The blot for 050 series and 030 series is the same, they are interchangeable.
- n Please be careful not to let coolant and chip be sucked into cylinder body when you machine parts. If the oil is polluted, please change it to new oil to protect the life of cylinder.
- n Please keep flow velocity not over max. value.

Ordering example:

030 Base No.	L Swivel Direction	D Acting Type	- 92 Type
(Bottom Flange)	L: Left R: Right	S: Single Acting D: Double Acting	11 22 52 92 121 202 352

公司地址：上海市静安区新闻路 1161 号 A1 室 邮编 200041

电话：021-51872743 传真：021-62275540

公司网站：www.fdzc.net E-mail:chengff@sh163.net

030 系列

转角油缸-下法兰式

安装形式: 管式与板式一体

030LS/030RS – Hydraulic Swing Clamps, Bottom Flange, 35-350 kg/cm ² , Single Acting						
Left 90°	030LS-22	030LS-52	030LS-92	030LS-121	030LS-202	030LS-352
Right 90°	030RS-22	030RS-52	030RS-92	030RS-121	030RS-202	030RS-352
Operating Pressure	35-350 kg/cm ²					
Acting Type	Single Acting					
Clamp Force (kN) (350 kg/cm ²)	210	490	800	1070	1740	3310
Clamping Stroke (mm)	8	10	12	13	14	16
Total Stroke (mm)	16.5	22.6	22.1	28.4	27.9	30.0
Effect Area – Clamp (cm ²)	0.77	1.81	3.16	4.06	7.10	12.39
Effect Area – Unclamp (cm ²)	--	--	--	--	--	--
Oil Capacity – Clamp (cm ³)	1.31	4.10	6.88	11.47	19.99	37.20
Oil Capacity – Unclamp (cm ³)	--	--	--	--	--	--
Max. Oil Velocity (L/min)	0.2	0.4	1.0	1.6	2.3	3.9
Clamp Arm	CAS-22	CAS-52	CAS-92	CAS-121	CAS-202	CAS-352
A (mm)	112	135	151	171	173	195
C (mm)	80	93	104	113	115	121
φD (mm)	27.9	34.8	47.8	47.8	63.8	80.0
D1 (mm)	47.2	54.1	70.1	66.8	85.1	100.1
D2 (mm)	45	57	54	73	70	89
φF (mm)	10	16	25	22	32	38
H (mm)	14	14	12	16	12	12
K (mm)	16	19	25	30	30	40
N (mm)	15.5	19.1	26.9	25.4	35.1	44.5
P (mm)	24	40	45	51	55	68
R (mm)	--	--	25.9	--	25.9	25.9
S (mm)	--	--	23.6	--	29.0	34.5
U (mm)	40	50	42	64	55	70
φU1 (mm)	42	50	--	64	--	--
φV (mm)	5.6	6.9	6.9	8.9	8.4	10.7
X (mm)	--	--	28.7	--	35.1	41.7
Z°	60	110	--	110	--	--
Weight (kg)	0.5	1.1	2.0	1.6	3.5	5.5

公司地址：上海市静安区新闻路 1161 号 A1 室 邮编 200041

电话：021-51872743 传真：021-62275540

公司网站：www.fdzc.net E-mail:chengff@sh163.net

030 系列

转角油缸-下法兰式

安装形式: 管式与板式一体

030LD/030RD – Hydraulic Swing Clamps, Bottom Flange, 35-350 kg/cm ² , Double Acting							
Left 90°	030LD-11	030LD-22	030LD-52	030LD-92	030LD-121	030LD-202	030LD-352
Right 90°	030RD-11	030RD-22	030RD-52	030RD-92	030RD-121	030RD-202	030RD-352
Operating Pressure	35-350 kg/cm ²						
Acting Type	Double Acting						
Clamp Force (kN) (350 kg/cm ²)	130	220	560	900	1160	1870	3380
Clamping Stroke (mm)	7	8	10	12	13	14	16
Total Stroke (mm)	13.0	16.5	22.6	22.1	28.4	27.9	30.0
Effect Area – Clamp (cm ²)	0.45	0.77	1.81	3.26	4.06	7.10	12.39
Effect Area – Unclamp (cm ²)	0.97	1.55	3.81	8.06	7.94	15.26	23.74
Oil Capacity – Clamp (cm ³)	0.66	1.31	4.10	6.88	11.47	19.99	37.20
Oil Capacity – Unclamp (cm ³)	1.31	2.62	8.69	17.70	22.94	42.61	71.38
Max. Oil Velocity (L/min)	0.2	0.2	0.4	1.0	1.6	2.3	3.9
Clamp Arm	CAS-11	CAS-22	CAS-52	CAS-92	CAS-121	CAS-202	CAS-352
A (mm)	95	112	135	151	171	173	195
C (mm)	70	80	93	104	113	115	121
φD (mm)	25.4	27.9	34.8	47.8	47.8	63.8	80
D1 (mm)	45.2	47.2	54.1	70.1	66.8	85.1	100.1
D2 (mm)	42	45	57	54	73	70	89
φF (mm)	8	10	16	25	22	32	38
H (mm)	14	14	14	12	16	12	12
K (mm)	12	16	19	25	30	30	40
N (mm)	13.5	15.5	19.1	26.9	25.4	35.1	44.5
P (mm)	20	24	40	45	51	55	68
R (mm)	--	--	--	--	--	25.9	25.9
S (mm)	--	--	--	23.6	--	29.0	34.5
U (mm)	35	40	50	42	64	55	70
φU1 (mm)	40	42	50	--	64	--	--
φV (mm)	4.8	5.6	6.9	6.9	8.9	8.4	10.7
X (mm)	--	--	--	28.7	--	35.1	41.7
Z°	60	60	110	--	110	--	--
Weight (kg)	0.5	0.5	1.1	2.0	1.6	3.5	5.5

公司地址：上海市静安区新闻路 1161 号 A1 室 邮编 200041

电话：021-51872743 传真：021-62275540

公司网站：www.fdzc.net E-mail:chengff@sh163.net

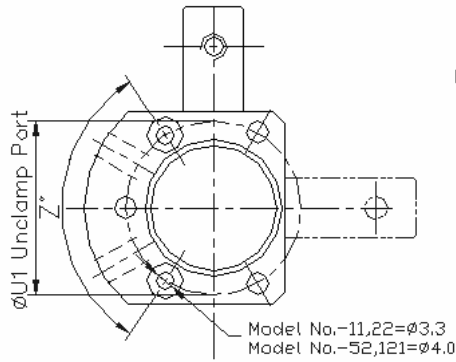
030 系列

转角油缸-下法兰式

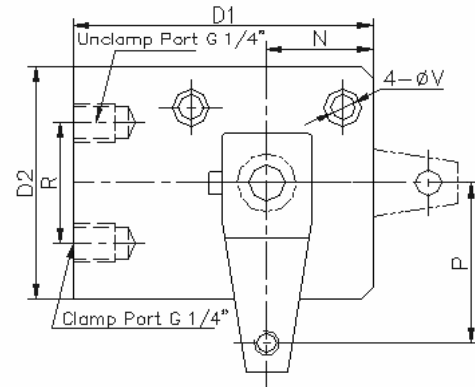
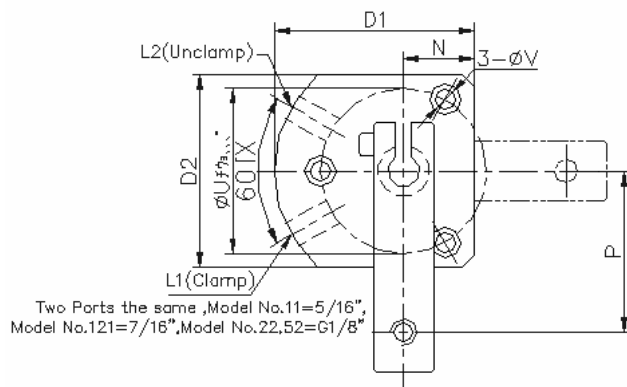
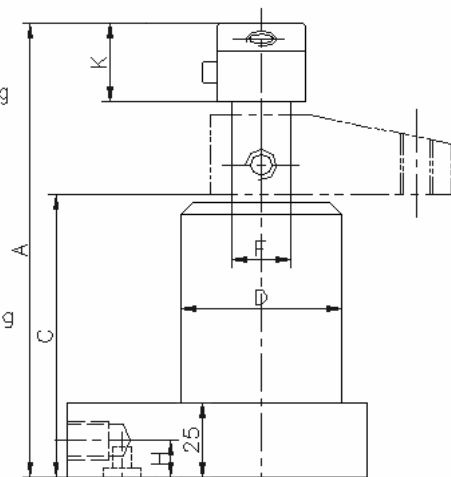
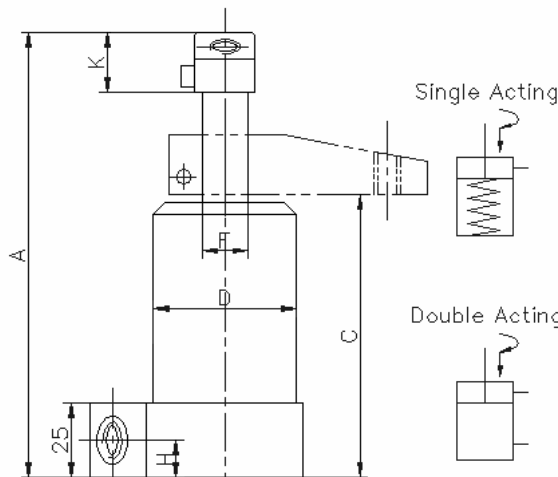
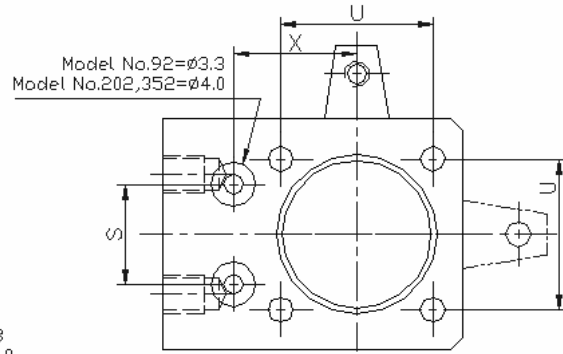
安装形式: 管式与板式一体

Drawing

Model No.-11,22,52,121



Model No.-92,202,352



030 系列

转角油缸-下法兰式

安装形式: 管式与板式一体

Mounting Drawing

