

# 040 系列

转角油缸-螺纹体式

安装形式: 管式安装



## Application

Threaded body can help you to use the screw of cylinder body and locking nut to fix clamp on fixture platen, the height of cylinder can be adjusted so you can fix the clamp on different height. Please refer to mounting drawing for correct mounting. It is easy for you to fix or loosen the clamp on fixture platen. It has single acting and double acting type.

## Feature

### Double acting

Oil circuits control clamping and unclamping, you can control the clamp and unclamp by changing the direction of direction valve.

### Single acting

The design for oil circuit is simpler, it is not necessary to design for unclamp, it can return back to original position by spring, the system design is simple because of few accessories.

## Note

- It can return back to position under free load.
- Please be careful not to let coolant and chip be sucked into cylinder body when you machine parts. If the oil is polluted, please change it to new oil to protect the life of cylinder.
- Please keep flow velocity not over Max. Value.

## Ordering example:

<b>040</b>	<b>L</b>	<b>D</b>	<b>-</b>	<b>92</b>
Base No.	Swivel Direction	Acting Type		Type
(Threaded Body)	L: Left R: Right	S: Single Acting D: Double Acting		11 22 52 92 121 202 352

公司地址: 上海市静安区新闻路 1161 号 A1 室 邮编 200041

电话: 021-51872743 传真: 021-62275540

公司网站: [www.fdzc.net](http://www.fdzc.net) E-mail: [chengff@sh163.net](mailto:chengff@sh163.net)

# 040 系列

转角油缸-螺纹体式

安装形式: 管式安装

## 040LS/040RS – Hydraulic Swing Clamps, Threaded Body, 35-350 kg/cm<sup>2</sup>, Single Acting

Left 90°	040LS-22	040LS-52	040LS-92	040LS-121	040LS-202	040LS-352
Right 90°	040RS-22	040RS-52	040RS-92	040RS-121	040RS-202	040RS-352
Operating Pressure	35-350 kg/cm <sup>2</sup>					
Acting Type	Single Acting					
Clamp Force (kN) (350 kg/cm <sup>2</sup> )	210	490	800	1070	1740	3310
Clamping Stroke (mm)	8	10	12	13	14	16
Total Stroke (mm)	16.5	22.6	22.1	28.4	27.9	30.0
Effect Area – Clamp (cm <sup>2</sup> )	0.77	1.81	3.16	4.06	7.10	12.39
Effect Area – Unclamp (cm <sup>2</sup> )	--	--	--	--	--	--
Oil Capacity – Clamp (cm <sup>3</sup> )	1.31	4.10	6.88	11.47	19.99	37.20
Oil Capacity – Unclamp (cm <sup>3</sup> )	--	--	--	--	--	--
Max. Oil Velocity (L/min)	0.2	0.4	1.0	1.6	2.3	3.9
Clamp Arm	CAS-22	CAS-52	CAS-92	CAS-121	CAS-202	CAS-352
A (mm)	112	135	143	171	165	186
B (mm)	59	69	80	86	93	105
C (mm)	26	27	33	27	35	35
CI (mm)	25	25	30	25	32	32
φD (mm)	M28x1.5	M35x1.5	M48x1.5	1 7/8-16	M65x1.5	M80x2
D1 (mm)	39.4	47.5	62.5	60.5	75.9	88.4
D2 (mm)	33	38	48	51	65	80
φF (mm)	10	16	25	22	32	38
H (mm)	10	10	13	10	13	13
J1 (mm)	--	--	43	--	55	65
K (mm)	16	19	25	30	30	40
N (mm)	15.5	19.1	23.9	25.4	32.5	39.9
P (mm)	24	40	45	51	55	68
W (mm)	--	--	63	--	71.9	81.5
Weight (kg)	0.5	1.1	2.0	1.6	3.2	5.5

公司地址：上海市静安区新闻路 1161 号 A1 室 邮编 200041

电话：021-51872743 传真：021-62275540

公司网站：[www.fzdc.net](http://www.fzdc.net) E-mail:[chengff@sh163.net](mailto:chengff@sh163.net)

# 040 系列

转角油缸-螺纹体式

安装形式: 管式安装

040LD/040RD – Hydraulic Swing Clamps, Threaded Body, 35-350 kg/cm <sup>2</sup> , Double Acting							
Left 90°	040LD-11	040LD-22	040LD-52	040LD-92	040LD-121	040LD-202	040LD-352
Right 90°	040RD-11	040RD-22	040RD-52	040RD-92	040RD-121	040RD-202	040RD-352
Operating Pressure	35-350 kg/cm <sup>2</sup>						
Acting Type	Double Acting						
Clamp Force (kN) (350 kg/cm <sup>2</sup> )	130	220	560	900	1160	1870	3380
Clamping Stroke (mm)	7	8	10	12	13	14	16
Total Stroke (mm)	13.0	16.5	22.6	22.1	28.4	27.9	30.0
Effect Area – Clamp (cm <sup>2</sup> )	0.45	0.77	1.81	3.16	4.06	7.10	12.39
Effect Area – Unclamp (cm <sup>2</sup> )	0.97	1.55	3.81	8.06	7.94	15.16	23.74
Oil Capacity – Clamp (cm <sup>3</sup> )	0.66	1.31	4.10	6.88	11.47	19.99	37.20
Oil Capacity – Unclamp (cm <sup>3</sup> )	1.31	2.62	8.52	17.70	22.94	42.61	71.28
Max. Oil Velocity (L/min)	0.2	0.2	0.4	1.0	1.6	2.3	3.9
Clamp Arm	CAS-11	CAS-22	CAS-52	CAS-92	CAS-121	CAS-202	CAS-352
A (mm)	95	112	135	143	171	165	186
B (mm)	53	59	69	80	86	93	105
C (mm)	28	26	27	33	27	35	35
C1 (mm)	25	25	25	30	25	32	32
φD (mm)	3/4-16	M28x1.5	M35x1.5	M48x1.5	1 7/8-16	M65x1.5	M80x2
D1 (mm)	30.5	39.4	47.5	62.5	60.5	75.9	88.4
D2 (mm)	20	33	38	48	51	65	80
φF (mm)	8	10	16	25	22	32	38
H (mm)	10	10	10	13	10	13	13
J1 (mm)	42	53	66	43	86	55	65
K (mm)	12	16	19	25	30	30	40
N (mm)	9.9	15.5	19.1	23.9	25.4	32.5	39.9
P (mm)	20	24	40	45	51	55	68
W (mm)	--	--	--	63	--	71.9	81.5
Weight (kg)	0.5	0.5	1.1	2.0	1.6	3.5	5.5

公司地址：上海市静安区新闻路 1161 号 A1 室 邮编 200041

电话：021-51872743

传真：021-62275540

公司网站：[www.fdzc.net](http://www.fdzc.net)

E-mail:[chengff@sh163.net](mailto:chengff@sh163.net)

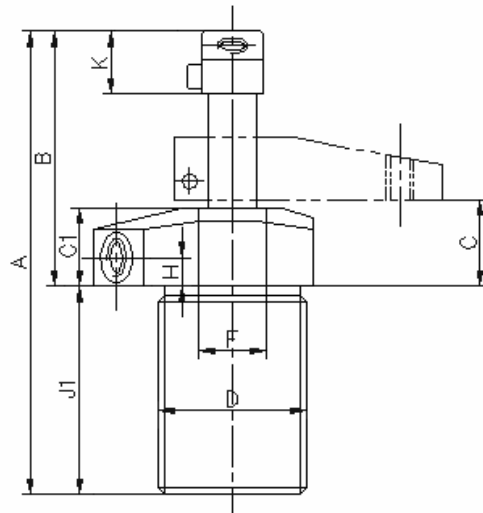
# 040 系列

转角油缸-螺纹体式

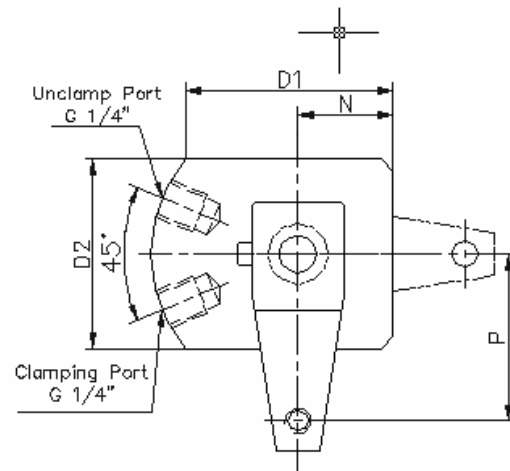
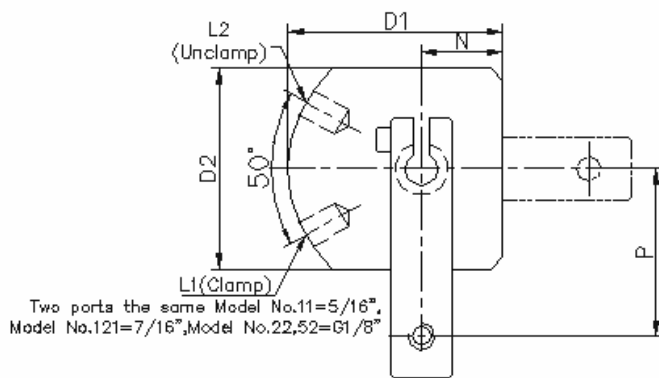
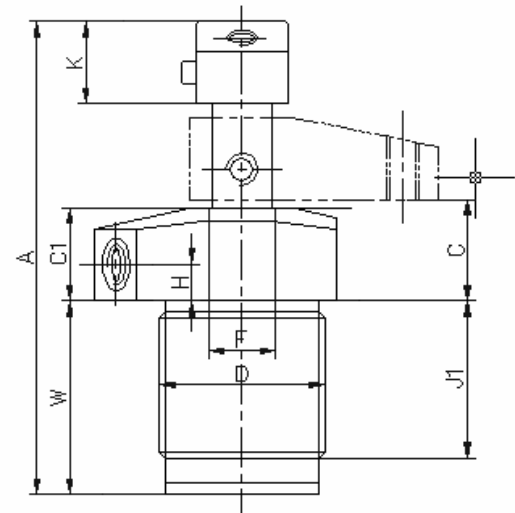
安装形式: 管式安装

## Drawing

Model No.-11,22,52,121



Model No.-92,202,352



# 040 系列

转角油缸-螺纹体式  
安装形式：管式安装

## Mounting Drawing

