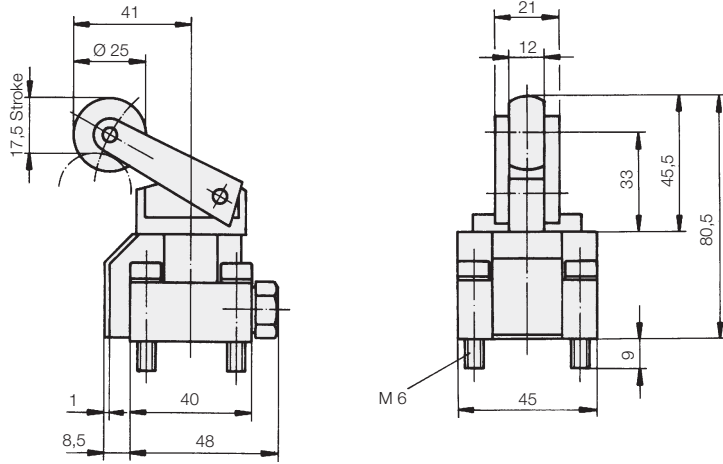
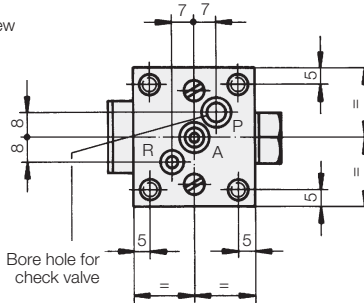


## Directional Control Valves ND 4

mechanically operated, max. operating pressure 500 bar



Bottom view



Seal (spare part)	Part-no.
at A: O-ring Ø 5x1.5	3000-340
at P: O-ring Ø 8x1.5	3000-343
at R: O-ring Ø 8x1.5	3000-343

### General characteristics

Type	Poppet valve
Type of connection	Subplate mounted (see accessories)
Port size	G 1/4
Weight	0.4 kg

### Hydraulic characteristics

Adm. operating pressure	0-500 bar
Adm. flow rate	8 l/min
Direction of flow	Only in direction of arrow as in symbol
Hydraulic oil	HLP 22

### Operating specification

mechanically by roller lever	
Operating force	25 N at 500 bar

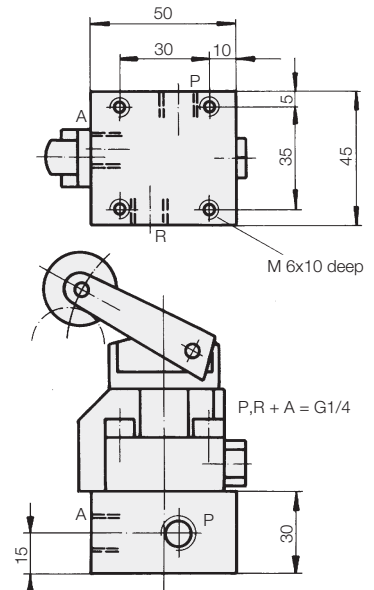
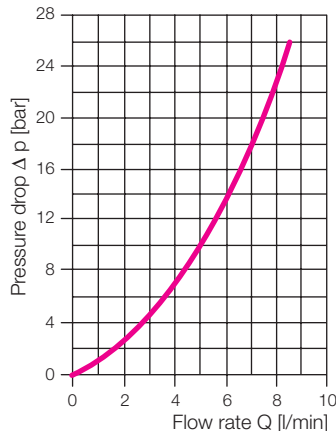
Description	Symbol	Part-no.
3/2directional control valve without check valve		2341-101
3/2directional control valve with built-in check valve		2341-201

Other switching functions on request

### Accessories

Mounting plate	3534-039
----------------	----------

Δ p-Q characteristic curve for kinematic viscosity of 53x10<sup>-6</sup> m<sup>2</sup>/s (HLP 22 at 20 °C)



网址: [www.fdzc.net](http://www.fdzc.net) 联系人: 程家雄 手机: 13601809714

联系电话: 021-51872743

E-mail: [chengff@sh163.net](mailto:chengff@sh163.net)