

Rotary Couplings

single, twin, four and six passages with / without leakage oil port
max. operating pressure 250 / 500 bar

Description

Rotary couplings supply the pressure oil to rotating and swivelling installations. They are mounted in the centre of rotation of the installation.

Operating conditions

When selecting, operating pressure and speed have to be taken into account. Only use hydraulic oil of the viscosity classes 22, 32 and 46. The rotary coupling has to be connected to the power unit on all levels to ensure sufficient lubrications of the seals. The rotary coupling must only be used in a temperature range between +10 °C and +60 °C.

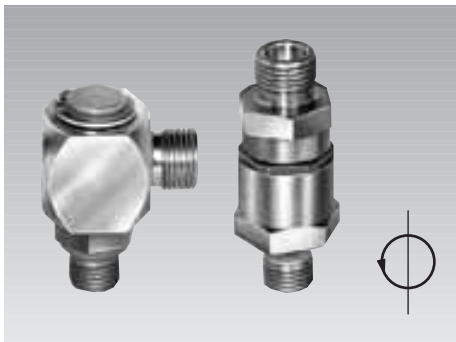
Operating conditions, tolerances and other data see data sheet A 0.100.

Ordering

When ordering, the most important operating data (pressure, temperature, media, speed i.e. cycle time) should be indicated to enable a possibly required adaptation to the customer's application.

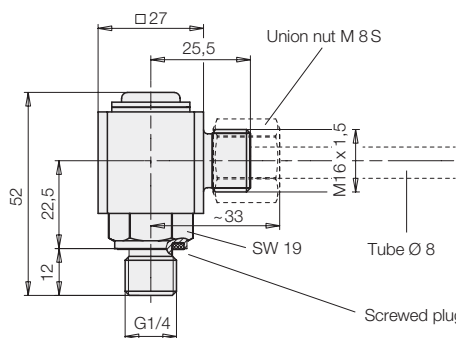
Specially designed rotary couplings are available on request.

Single passage rotary couplings



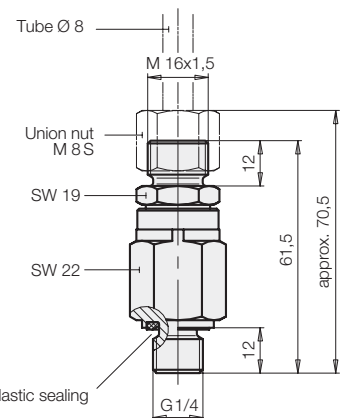
Angle swivel joint

Adm. operating speed: 20 min⁻¹
Starting torque at 500 bar: 1.2 Nm



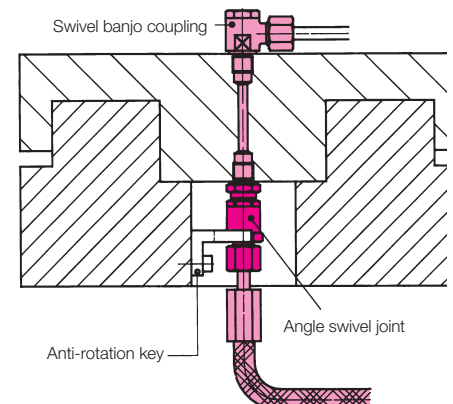
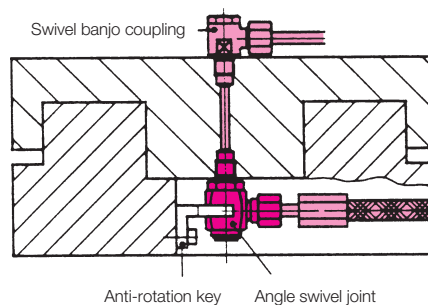
Part-no. 9208-156

Axial swivel joint



Part-no. 9208-069

Application examples



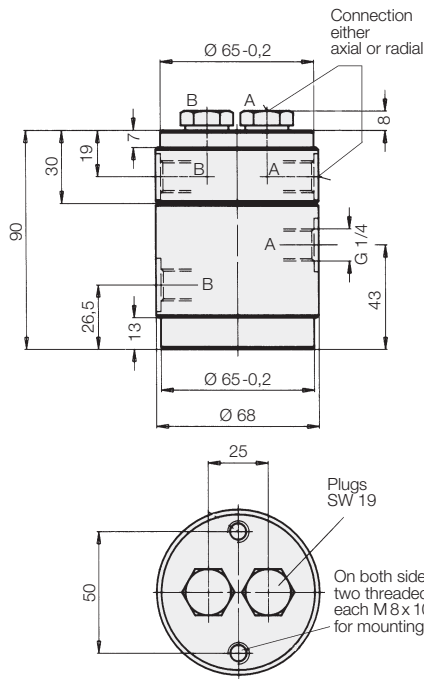
网址: www.fdzc.net 联系人: 程家雄 手机: 13601809714

联系电话: 021-51872743

E-mail: chengff@sh163.net

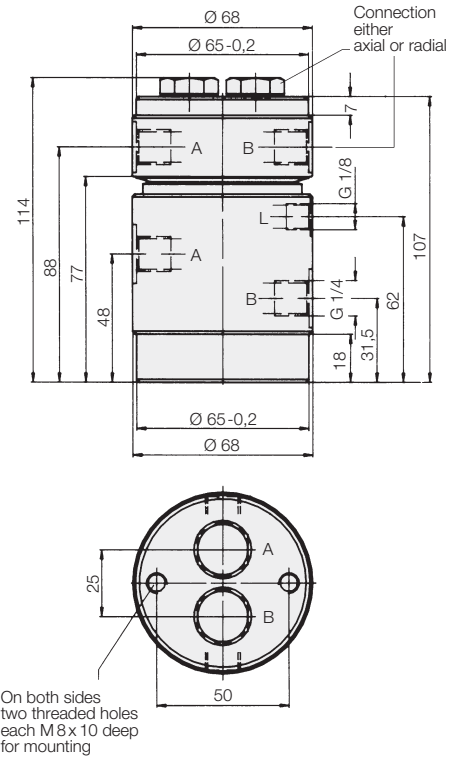


Twin passage rotary coupling

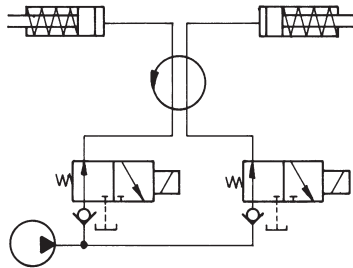


Twin passage rotary coupling

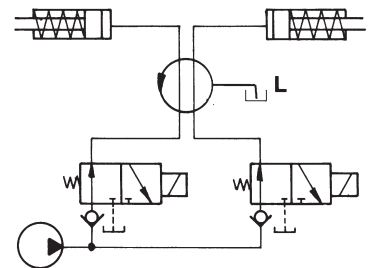
with leakage oil recirculation in the housing



Hydraulic circuit diagram



Hydraulic circuit diagram



Rotary coupling ND 5

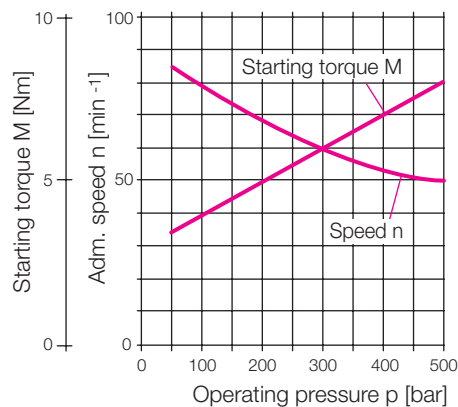
Operating pressure range [bar]	Leakage rate [cm ³ /100 h]	Weight [kg]	Part-no.
100-500	40	2.6	9281-103
10-250	20	2.6	9281-106

Rotary coupling ND 5

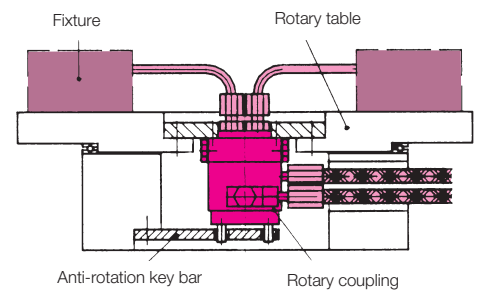
with leakage oil recirculation in the housing

Operating pressure range [bar]	Weight [kg]	Part-no.
10-500	3.05	9281-105

Max. adm. speed n and starting torque M as a function of operating pressure p

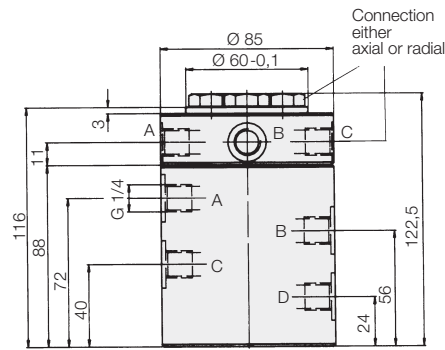


Application example

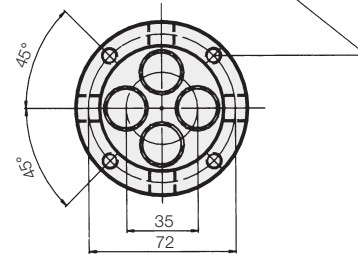




Four passage rotary coupling

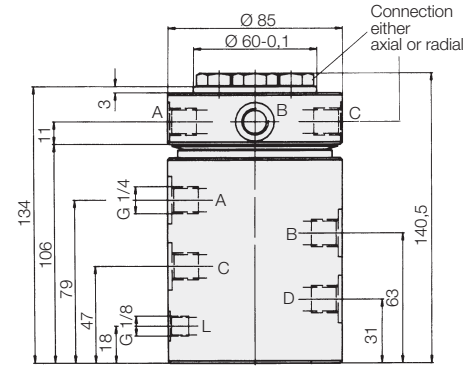


On both sides four threaded holes each M8x12 deep for mounting

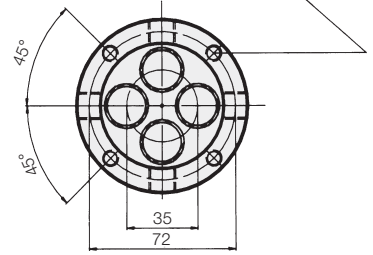


Four passage rotary coupling

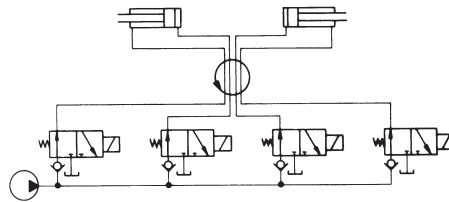
with leakage oil recirculation in the housing



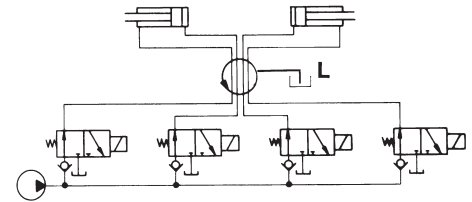
On both sides four threaded holes each M8x12 deep for mounting



Hydraulic circuit diagram



Hydraulic circuit diagram



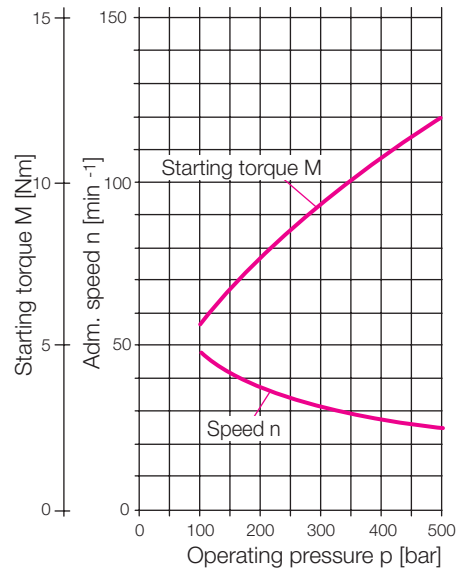
Rotary coupling ND 5

Operating pressure range [bar]	Leakage rate [cm ³ /100 h]	Weight [kg]	Part-no.
100-500	60	5.25	9284-005
10-250	25	5.25	9284-006

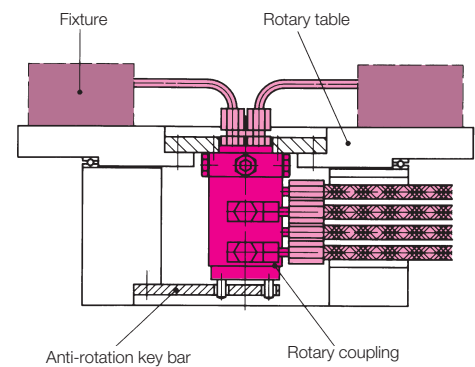
Rotary coupling ND 5

Operating pressure range [bar]	Weight [kg]	Part-no.
100-500	6.1	9284-105
10-250	6.1	9284-106

Max. adm. speed n and starting torque M as a function of operating pressure p



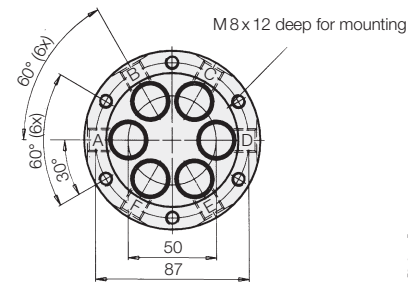
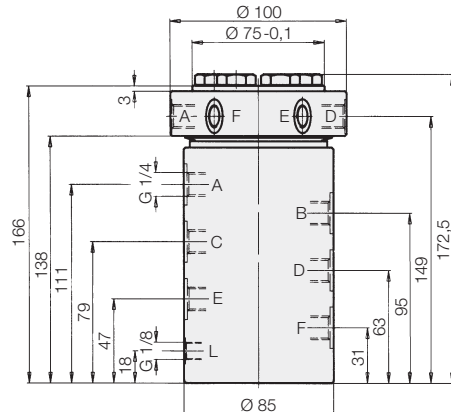
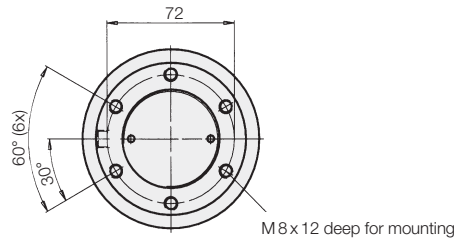
Application example



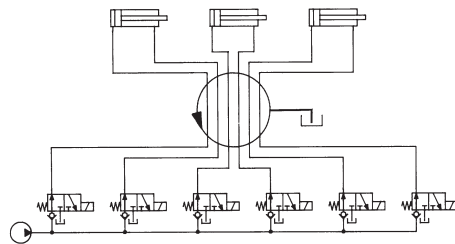


Six passage rotary coupling

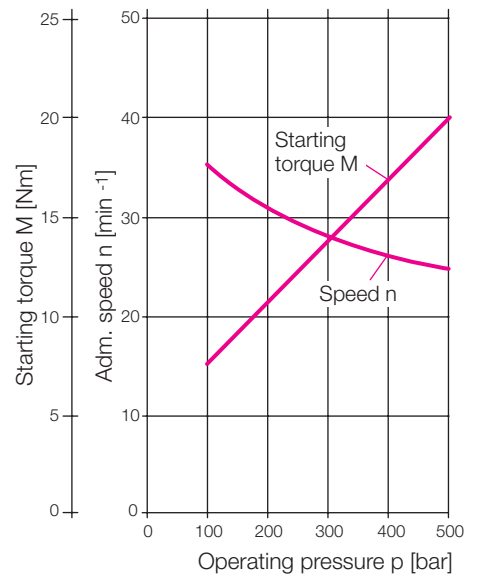
with leakage oil recirculation in the housing



Hydraulic circuit diagram



Max. adm. speed n and starting torque M as a function of operating pressure p



Rotary coupling ND 5

Operating pressure range [bar]	Weight [kg]	Part-no.
10-500	8.25	9286-105

Application example

