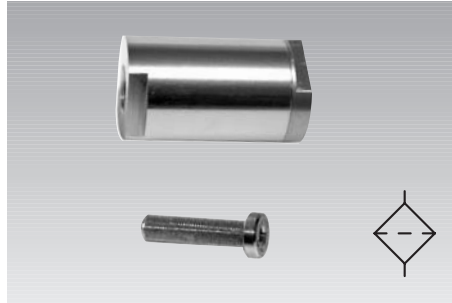
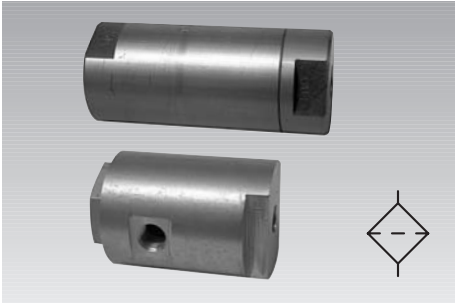


High-Pressure Filter

max. operating pressure 350 bar



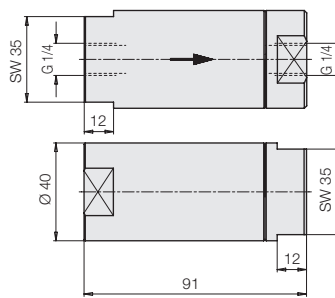
Description

Filter elements are used to protect hydraulic elements against contamination. They are installed e.g. in front of valves and intensifiers and avoid penetration of swarf and contamination. Thereby the safety of functioning as well as the life are considerably increased.

High-pressure filter

- Suitable for large flow rates
- Up to 350 bar operating pressure
- Filter insert can be exchanged

Max. operating pressure	350 bar
Filter capacity	10 µm
Filter material	bronze
Filter body material	aluminium
Part-no.	3887-064
Accessory, spare filter insert	3887-061



Important notes

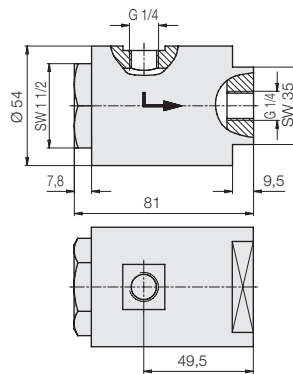
Always consider the direction of flow, otherwise the filter element will be destroyed (see example page 2).

For 3887-064 and 3887-065 use fittings with soft seals (see page B 1.554).

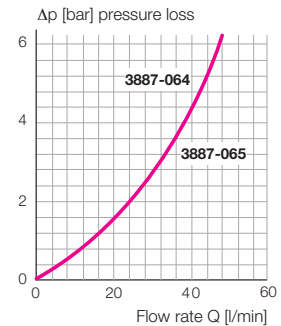
High-pressure filter, L-shape

- Suitable for large flow rates
- Up to 350 bar operating pressure
- Filter insert can be exchanged
- Simple exchange of the filter insert without dismantling the element

Max. operating pressure	350 bar
Filter capacity	10 µm
Filter material	bronze
Filter body material	aluminium
Part-no.	3887-065
Accessory, spare filter insert	3887-061



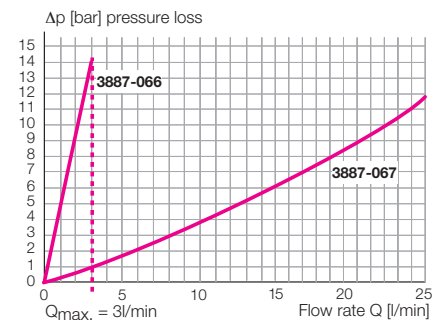
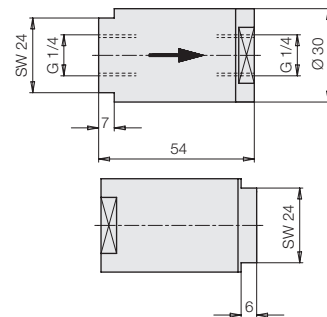
Differential pressure in proportion to the flow rate



High-pressure filter, compact

- Compact design for use in limited space
- Up to 350 bar operating pressure
- Filter insert can be exchanged

Max. operating pressure	350 bar
Filter capacity	20 µm
Filter material	special steel
Filter body material	special steel
Part-no.	3887-067
Accessory, spare filter insert	3887-071

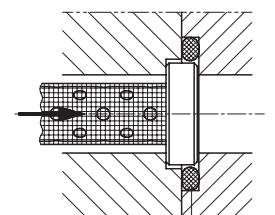
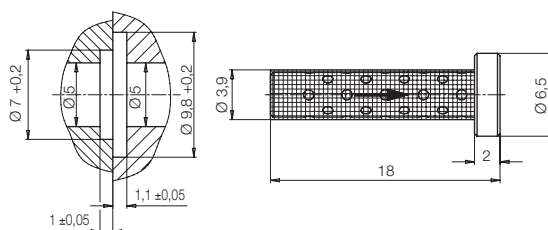


Plug-in filter

- Smallest dimensions
- For installation in drilled channels and plates, thereby direct protection of hydraulic components

Max. operating pressure	350 bar
Filter capacity	20 µm
Filter material	special steel
Filter body material	special steel
Part-no.	3887-066
Accessory, O-Ring 7x1.5	3000-342

Installation dimensions

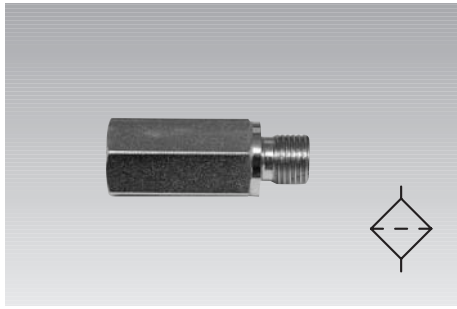


O-ring (accessory)

网址: www.fdzc.net 联系人: 程家雄 手机: 13601809714

联系电话: 021-51872743

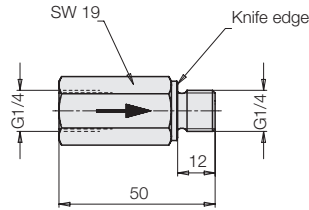
E-mail: chengff@sh163.net



Threaded-body filter

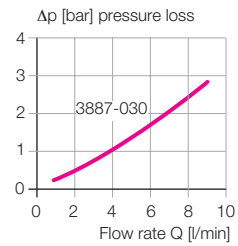
- For installation in front of couplings
- For protection against rough swarf
- Up to 500 bar operating pressure

Max. operating pressure	500 bar
Filter capacity	100 μm
Filter material	steel
Filter body material	steel, galvanized
Part-no.	3887-030

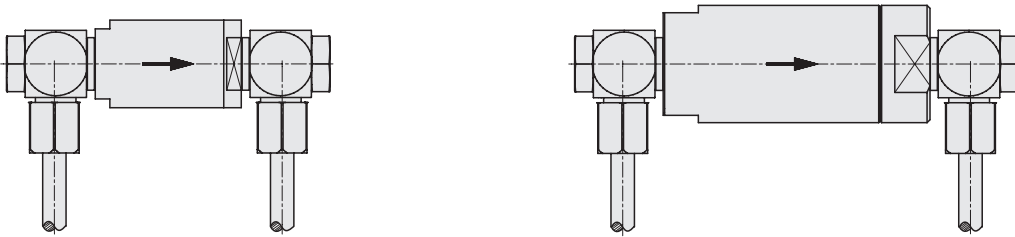


Important note

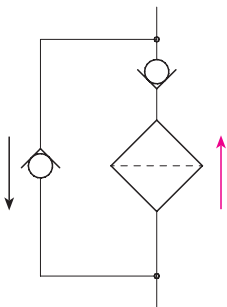
All filter elements have to be cleaned at regular time intervals, due to strong contamination a pressure increase and destruction of the filter can occur and thereby also other components can be damaged.



Installation example for simple exchange of the filter insert (3887-064, -067)



Example of an circuit diagram with flow and filtering function in one direction (2-way circuit)



Example of an circuit diagram with flow and filtering function in both directions (rectifier circuit)

