

Pressure Switch electro-hydraulic pressure range 5-180 bar / 50-350 bar and 80-600 bar



Description

Electro-hydraulic pressure switch piston version with aluminium die-casting housing. Precise adjustment of the switching point. Any alignment of the electrical port, since the housing can be rotated by 90°. The adjusting screw is made of stainless steel with hexagon socket SW5.

Application

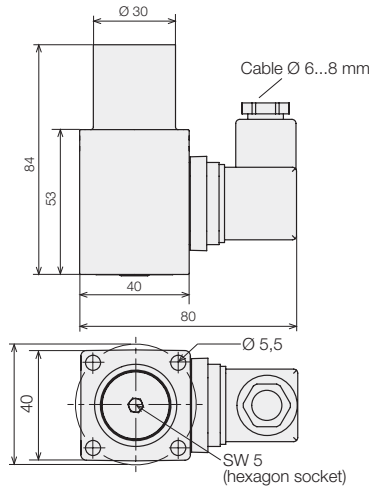
Electro-hydraulic pressure switches are devices, which close or open electrical contact under pressure. They are used to switch on or off pump motors, valves for unpressurised cycles, for pressure-dependent machine tool interlock or similar applications in power units, machines and installations.

Technical characteristics

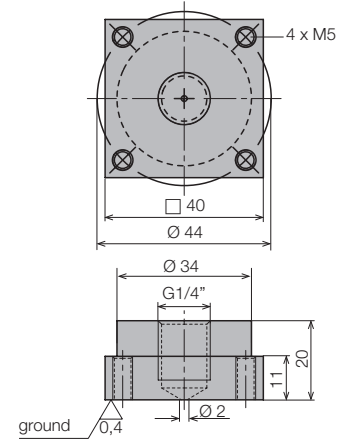
Configuration	Piston pressure switch
Type of mounting	2 screws M5x60 SW4 DIN 912 - 10.9 Retaining ring (included in the delivery)
Seating torque	5.0 Nm
Pressure port	Connecting flange 40x40 CETOP
Sealing	O-ring FKM 5x1.5 O-ring FKM 8x1.5
Weight	0.35 kg

Electric characteristics

Electric connection	Plug DIN EN 175301-803 A
Micro switch	Single-pole change-over contact
Max. switching frequency	60 min ⁻¹
Code class	IP 65
Contacts	fine silver or gold
Max. load	see chart
Spark extinction is recommended.	



Accessory: Connecting plate
Part-no. 3534-051



Hydraulic characteristics

Adjustable pressure setting	5 -180 bar	50 -350 bar	80 -600 bar
Hysteresis	≤ 10 %	≤ 10 %	≤ 10 %
Test pressure	600 bar	600 bar	900 bar
O-ring	8x1.5	5x1.5	5x1.5
Pressure switch with silver contacts	Part-no. 9730-302	9730-301	9730-300
Pressure switch with gilded contacts ◊	Part-no. 9730-312	9730-311	9730-310

◊) If low currents are to be switched, e.g. inputs of a programmable control, pressure switches with gilded contacts should be used.

Electrical loading capacity

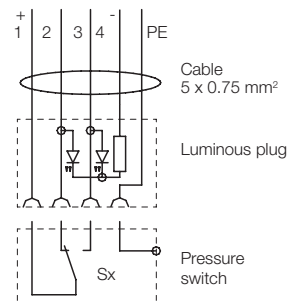
Silver contacts	Inductive load	Resistance load
30 V DC	3.0 A	4.0 A
250 V DC	0.2 A	0.2 A
250 V AC	2.0 A	3.0 A
125 V AC	3.0 A	5.0 A
Minimum loading capacity: 160 mA at 5 V DC		
Gilded contacts ◊		
30 V DC		0.1 A
125 V AC		0.1 A

Accessory

Luminous plug with Double LED, 3m cable	Part-no. 3141-802
Connecting plate	3534-051
Spare O-ring 5x1.5	3001-147
Spare O-ring 8x1.5	3000-275

Switching symbol:
Luminous plug

Part-no. 3141-802



网址: www.fdzc.net 联系人: 程家雄 手机: 13601809714

联系电话: 021-51872743

E-mail: chengff@sh163.net