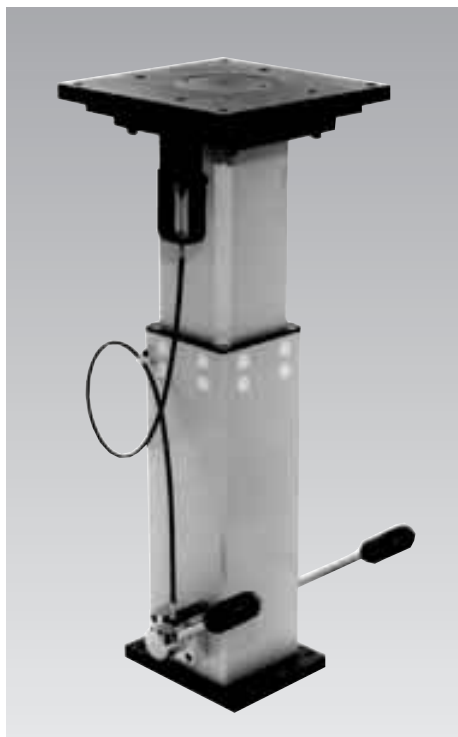


## Hydraulic Lifting Unit with Rotating Plate



### Operation

The stroke movement is obtained by a hydraulic lifting jack with single-lever actuation, with oil being pumped by means of a piston pump into a plunger cylinder. To lift the load, the right foot pedal has to be depressed by approx. 45° several times. To lower the load, the foot pedal has to be raised by approx. 10°. Thereby the oil returns from the cylinder into the reservoir.

The table plate is positively locked in the positions 4 x 90°. To unlock the table plate the left foot pedal has to be continuously depressed. The table plate is unlocked and can be rotated to the next position. By releasing the foot pedals the index bolt snaps in automatically.

Return springs keep the foot pedals in the off-positions.

### Material

The columns, top and base plates are made of anodized aluminium. The top and base plates are black lacquered. The table plate is made of black-oxide steel.

### Application and installation instructions

If lifting units are directly connected with the floor, and the centre of gravity of the load to be lifted is outside the fixing screws, considerable pulling forces act on the fixing screws. Depending on the ground conditions, this can lead to pulling out the screws and thereby to tilting of the lifting unit. We recommend in such cases to use an additional base plate. Suitable base plates are available on request from the Römheld accessory programme. The centre of gravity must be within the 4 fixing screws.

### Application

The lifting unit with rotating plate is particularly suitable for height adjustment and rotation through the vertical axis of assembly equipment, working tables, demonstration objects, and similar equipment.

Lifting units with rotating plate represent a basic unit for mechanisms which require controlled lifting and lowering of loads or shall be used for height adjustment and positioning only.

The optimum working position for the respective operator is obtained by manual height adjustment.

### Advantages

- Good accessibility
- High flexibility
- Improved productivity
- Optimized ergonomics
- Simple handling
- Short time of amortization



Concentric vice in preparation for machining of workpieces

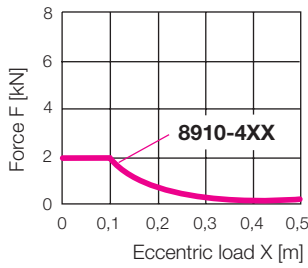
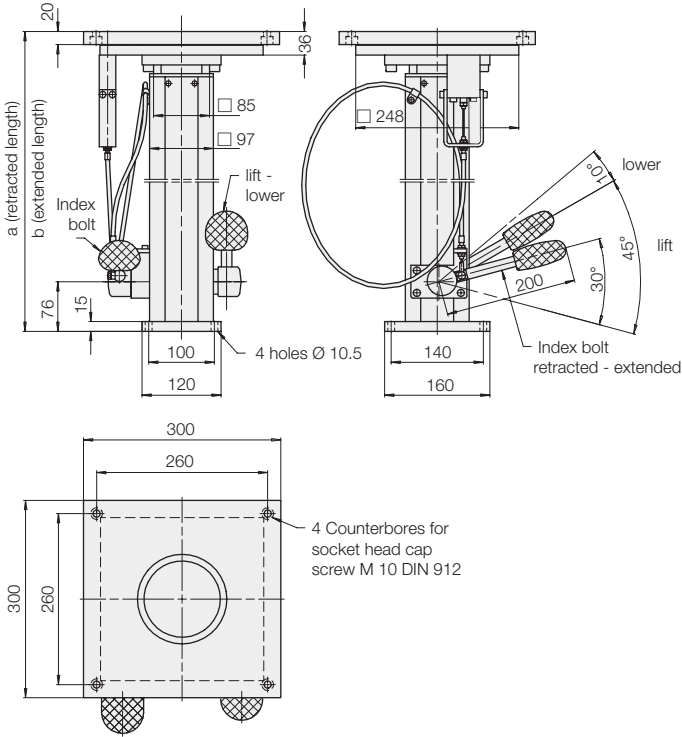
网址: [www.fdzc.net](http://www.fdzc.net) 联系人: 程家雄 手机: 13601809714

联系电话: 021-51872743

E-mail: [chengff@sh163.net](mailto:chengff@sh163.net)

Lifting units with manual-hydraulic height adjustment and rotating plate

Line 8.910 F = 2 kN

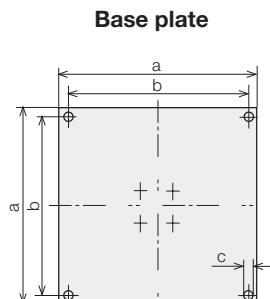


Version without flow control valve

Line 8.910 F = 2 kN

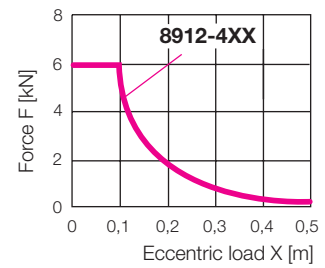
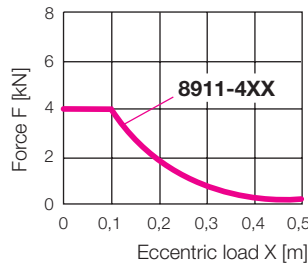
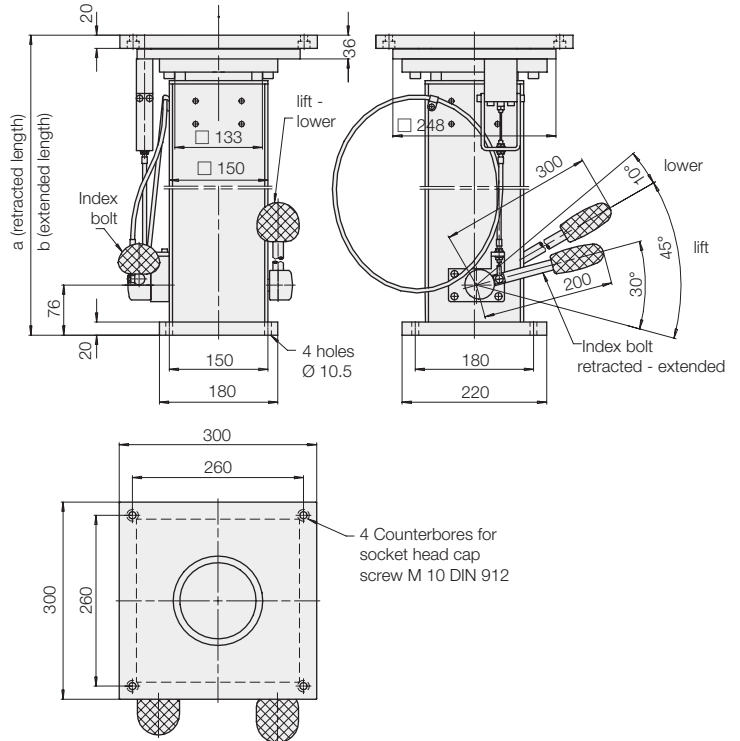
Stroke	[mm]	200	300	400	500	600
a	[mm]	456	556	656	756	856
b	[mm]	656	856	1056	1256	1456
No. of operations		16	25	33	41	50
Weight	[kg]	32.5	33.0	34.5	36.0	37.5
Part-no.		8910-422	8910-432	8910-442	8910-452	8910-462

Accessory for line	Base plate Part-no.
8.910	0891-028
8.911/12	0891-027



Line 8.911 F = 4 kN

Line 8.912 F = 6 kN



Versions with flow control valve

Line 8.911 F = 4 kN

Stroke	[mm]	200	300	400	500	600
a	[mm]	456	556	656	756	856
b	[mm]	656	856	1056	1256	1456
No. of operations		16	25	33	41	50
Weight	[kg]	39	44	49	54	59
Part-no.		8911-422	8911-432	8911-442	8911-452	8911-462

Line 8.912 F = 6 kN

Stroke	[mm]	200	300	400	500	600
a	[mm]	456	556	656	756	856
b	[mm]	656	856	1056	1256	1456
No. of operations		20	30	40	50	60
Weight	[kg]	39	44	49	54	59
Part-no.		8912-422	8912-432	8912-442	8912-452	8912-462